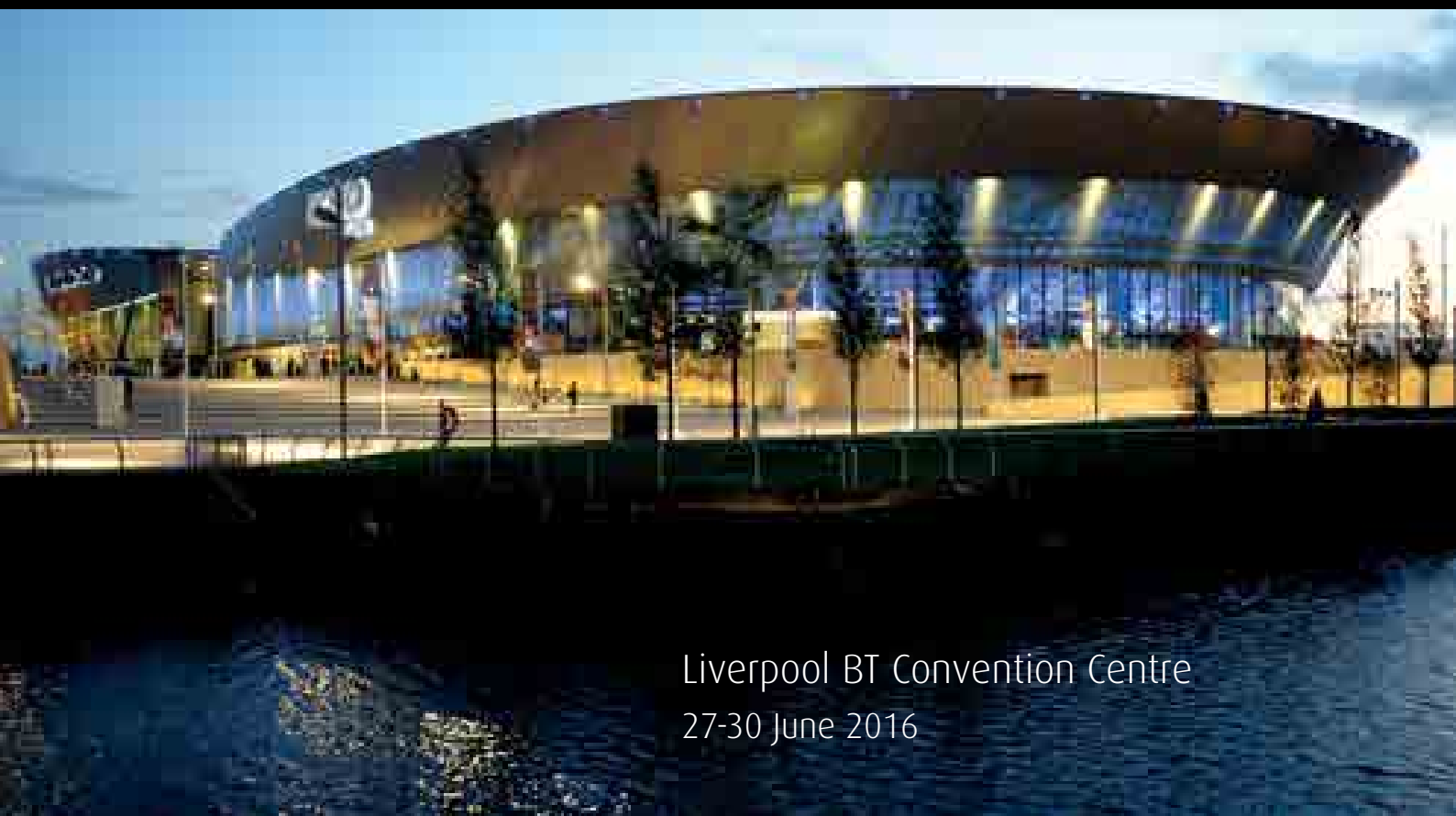




# Annual Meeting

Final  
Conference & Scientific Programme



Liverpool BT Convention Centre  
27-30 June 2016

#BAUS16



The British  
Association  
of Urological  
Surgeons

Incorporating  
Meetings of the Sections of:  
Academic Urology  
Andrology & Genito-Urethral Surgery  
Female, Neurological & Urodynamic Urology  
and  
The Office of Education Teaching and Skills Courses

[www.baus.org.uk](http://www.baus.org.uk)

## Sponsors

The Association wishes to acknowledge the generous support of the following companies:

### Premier Sponsors



### Major Sponsors



### Sponsors of the BAUS Office of Education Teaching & Skills Courses

**Bard Biopsy**

**BK Medical**

**Boston Scientific**

**BXT Accelyon**

**Cook Medical**

**Karl Storz - Endoskope**

**Lumenis**

**Manatech**

**Medtronic & Covidien**

**Neotract**

**Olympus Medical**

**Porges, a Coloplast Division**

In addition the Association wishes to acknowledge the sponsors of  
The BAUS Section of Female, Neurological and Urodynamic Urology - Astellas Pharma Ltd



# Annual Meeting

Liverpool BT Convention Centre  
27-30 June 2016

Monday 27 June

Annual Meetings of the Sections of:

[Academic Urology](#)

[Andrology & Genito-Urethral Surgery](#)

[Female, Neurological & Urodynamic Urology](#)

Monday 27 June to Thursday 30 June

[Medical and Trade Exhibition](#)

Monday 27 June to Wednesday 29 June

[Office of Education Teaching and Skills Courses](#)

## Contents

Welcome from the President	2	From Romans to Robots	9
Introduction by the Honorary Secretary	3	Social Programme	11
General Information	5-7	Satellite Sessions	13-15
Abstract Book	5	Section Meetings Monday 27 June	17-26
Badge Scanning	5	Academic Urology	17-19
Conference Catering	5	Andrology & Genito-Urethral Surgery	20-23
BAUS 2016 App	5	Female, Neurological & Urodynamic Urology	24-26
BAUS on Demand (BOD POD'S)	5	Meeting Programme	17-37
Cloakroom	5	Monday 27 June	17-26
Continuing Medical Education	5	Tuesday 28 June	27-31
Delegate Badges	5	Wednesday 29 June	32-35
Exhibition – Location and Opening Hours	5	Thursday 30 June	36-37
Wifi	7	Medal Winners' Biographies	39-42
Liverpool Tourist Information	7	Paper and Posters	43-53
Media Check	7	Best Academic Paper Session	43
Paper and ePoster Sessions	7	ePoster Sessions	45-53
Prayer Room	7	Exhibition	54-55
Registration Desk	7	Exhibition Plan	54
Satellite Sessions	7	Exhibitor List	55
Scientific Sessions	7	Office of Education Teaching & Skills Courses	56-65
Social Media	7	Introduction from the Director of Education	56
Travel and Parking	7	Courses at a Glance	57
Venue	7	Course Outlines	58-65
2017 BAUS Annual Meeting	7	BAUS 2016 App information	67-69
Registration Information	8	Emergency Procedures	70
Badge Scanning	8		
Cancellations	8		
Exhibition-only Registration	8		
Accompanying Persons Registration	8		
Non-Exhibiting Company Personnel	8		

## Welcome from the President

**It is a real pleasure to welcome you to the historic maritime city of Liverpool for the 72nd annual scientific meeting of the British Association of Urological Surgeons.**

Liverpool is now a truly dynamic city with much to offer beyond the meeting itself. It is of course the hometown of The Beatles and the world-famous Grand National at Aintree Racecourse and two well-known football clubs.

I have to thank Duncan Summerton, our Honorary Secretary, for putting together an exceptional scientific programme. The Academic, Andrology (AGUS) and Female (FNUU) Sections are holding their annual meetings on the Monday 15 June and the Oncology and Endourology Sections are contributing significantly to the scientific content as well.

Paul Jones, our Honorary Secretary Elect, has produced an excellent programme of Teaching and Skills Courses with the introduction of several new courses this year.

We are fortunate again to have attracted a significant number of world-leading urologists from around the world. This includes a number of Presidents and leaders of other national Urological Associations. The aim is to give you, the delegates, a comprehensive overview of the latest in world urology. Thursday in particular is a strong day with sessions presented by the American Urological Association (AUA), the BJUI and also by the International British Urology Society (IBUS). Please therefore use the whole Meeting to achieve your continuing professional development.

The Welcome Reception will be held in the Exhibition Hall at 1800 on Monday 27 June and will provide an additional opportunity to visit the exhibition, this will be followed by the

5-a-side football competition. The main social event is on Wednesday 29 June evening at 1800 and is a drinks reception, generously sponsored by Signostics, which will be held in the Grade I listed Royal Liver Building which is part of the UNESCO designated World Heritage Maritime Mercantile City. This will be a great chance to catch up with friends and colleagues.

I would also like to express my thanks to our colleagues from the pharmaceutical and equipment companies for their very generous support of BAUS at the Annual Meeting and throughout the year. I hope therefore you will show your appreciation by visiting their stands in the Exhibition Hall during the week. We have scheduled times into the programme to allow you to visit the exhibition.

Finally, I would like to offer my special thanks to the Organising Committee, the BAUS Section Chairmen, Secretaries and Committee Members, our Abstract Reviewers and, in particular, Duncan Summerton and the staff in the BAUS Office (especially Hannah Doyle, Events Manager and Harry Heald, Events Co-ordinator), for the enormous amount of work that they have put into planning this meeting.

On behalf of the BAUS Council I welcome you to the BT Convention Centre, Liverpool.

**Mark J Speakman**  
President



## Introduction by the Honorary Secretary

### The 72nd BAUS annual meeting in Liverpool this year should have something for everyone.

Liverpool is a popular venue - as we know from the very positive feedback after our previous visits to the city in 2011 and 2014 - this will be a great environment in which to learn, teach, discuss, catch up on old acquaintances and make some new ones. We hope that we have constructed a varied and stimulating programme which not only covers both the more specialised and general aspects of Urology, but also some themes and issues which remind us of our greater professional work and responsibilities. Our Guest Lecturer David Nott regrets that he is unable to attend BAUS to give the Guest Lecture as he has been called away on a mission. Instead he has kindly sent a pre-recording of a previous lecture 'Medecins Sans Frontieres'. Given the nature of David's work and the impact of it has on the lives of people in areas of conflict, we believe that this will be of real interest to delegates. This year's Urolink Session concentrates on "Building sustainable bridges: linking urology training and care in Africa". On the following day, Mr Mark Speakman will lead a session on the UK rationalization of pelvic trauma and accompanying urethral injuries.

The Section of Oncology session on Tuesday morning will showcase two of the most exciting UK clinical trials, providing evidence to support prostate cancer care for the future. Professor Freddie Hamdy and Professor Mark Emberton will be sharing some of the much anticipated results from the ProtecT (comparison of surgery, radiotherapy and surveillance for prostate cancer) and PROMIS (use of MRI to detect prostate cancer) trials. There will also be an update of the National Prostate Cancer Audit by Professor Noel Clarke.

We have many invited national and international experts who will be taking part not only in the plenary sessions but also in sub-plenary and poster sessions. The St Peter's Medal will be awarded to Professor Maggie Knowles, who will give a lecture on: *Bladder Cancer Research in 2016 - where are we now?* The St Paul's Medal will be awarded to Professor Joseph A. Smith, who will give a lecture on: *Will the urologic oncologist of the future be a surgeon?*

Between the plenary sessions, and a new feature this year, will be some short videos from patients (some of who you might recognize) about their experiences with urological disease and problems - and we are grateful to PCUK for their assistance in producing these. Throughout the meeting various sessions and guest lectures will be lead by the AUA, IBUS, TUF, BJUI, JCU, ESSM, BURST and SURG and we are all very fortunate to be able to benefit from this degree of co-operation and wealth of knowledge.

This year 538 abstracts were submitted and 169 were accepted. Following on from the success of e-posters all accepted abstracts will be presented in moderated ePoster Sessions posters. The top scoring abstracts will also be presented on the Best Academic Paper Session on Monday 27 June. This year, the videoposter session, as an entity, has been discontinued as the e-Posters allow for the insertion of video clips in the relevant ePoster sessions - of which there are 11, all of which are dual-chaired.

It is good to see that, increasingly, the Sections are organizing joint sessions - which are always popular and well-attended. This year we have the Andrologists combing with the Academic Section and then again with the Oncologists on the following day.

The history component of the meeting slowly increases and this year there is a poster session, and at the cabinet/museum on the BAUS stand in the exhibition there will be talks on historical topics on Tuesday and Wednesday lunchtimes.

BAUS would not be BAUS without a social component to the week, and you will be pleased to learn that this year is no different. There is a welcome drinks reception on Monday evening, in the exhibition hall, to which you are all invited. The regular five-a-side football organized by Saiful Miah and Altaf Mangera is later on the Monday evening. The SURG Meeting will be on Tuesday evening and as well as debating serious issues such as run-through training, they will present the silver cystoscope to a leading trainer and then continue on from there...

On Wednesday at 1800 there is a drinks reception in the Liver Building during which the Keith Yeates Medal, Karl Storz Harold Hopkins Golden Telescope Award and Certificates of Distinction for some of our outstanding supporters will be presented. After this, you will be free to enjoy all that Liverpool has to offer as there will not be a formal dinner, in response to the feedback from previous years.

I am very grateful to our previous Secretary, Frank Keeley, for organizing the previous two year's meetings so well and many thanks to Paul Jones who has done a great job in organizing the 20 instructional courses (see pages 56-65 for details) this year.

As ever, this meeting would not be possible without the generous support of our partners in Industry - so please make time in your programme to visit the stands, talk to the exhibitors and help to secure the future of this successful relationship. I know that the companies really appreciate your "footfall" and value the interaction. The satellite symposia are also varied and look to be excellent (see pages 13-15).

I would like to close by thanking our President Mark Speakman, all the Trustees, Council, BAUS staff (especially Hannah Doyle and Harry Heald), and Sections for all their suggestions, hard work and support in getting this meeting together. Also thank you in advance to all the speakers, chairs and presenters for giving up their time and expertise so readily and to every delegate for attending and taking part. I hope that you have an enjoyable meeting and that it helps to confirm why we choose to work in this interesting and varied speciality.

I look forward to meeting you in Liverpool.

Best Wishes

**Duncan Summerton**  
Honorary Secretary



# A ureteroscope that's ready when you are.

## Introducing the LithoVue™ Single-Use Digital Flexible Ureteroscope.

Now there's a flexible digital ureteroscope you can rely on to perform like new every time. Because it is. With the game-changing, single-use Boston Scientific LithoVue System, there's no need for sterilisation. No costly scope repairs. No scope reprocessing. And no degradation of scope performance over time. Instead, you start each case with a new high-quality, lightweight, digital scope that delivers detailed, high-resolution digital images to guide the way, so you can remove stones quickly, easily, safely and affordably.

**Is the LithoVue Single-Use Digital Flexible Ureteroscope right for you? Visit [www.LithoVue.com](http://www.LithoVue.com) to learn more.**



## General Information

### Abstract Book

Abstracts will be published in the Conference Edition of the JCU which will be in your delegate bags.

### Badge Scanning

This year we will again be using badge scanning as lead retrieval. Exhibitors are able to hire scanners and scan delegate badge barcodes in order to download the following information:

- **Name, Job Title, Place of Work**

(as you specify on your online registration form)

- **Work Email address**

(as you specify on your online registration form)

Badge scanning by exhibitors is not compulsory. If you DO NOT wish to disclose this information to exhibitors then do not allow your badge to be scanned. BAUS Staff may scan you on the entrance into sessions; this is purely for a count of attendance at the sessions.

### Conference Catering

Complimentary drinks will be provided in the Exhibition Hall at the BT Convention Centre from Monday lunchtime to Thursday. Lunch will be available for purchase within the Exhibition Hall.

### BAUS 2016 App

We are pleased to announce that we will have a BAUS Annual Meeting Smartphone App again this year.

You can use the App to:

- View the main programme
- Plan your week
- View Overseas Speaker and Guest Lecturer Profiles
- View Paper and ePoster Abstracts
- View the Exhibition Plan and Exhibitor Details
- Ask questions within sessions
- Provide feedback
- Find out further information about the Meeting and Social Events

The BAUS 2016 App will be a hybrid App - a combination of a web based App and a native App which can be downloaded from the various App stores, please search 'BAUS 2016'.

### BAUS on Demand (BOD-POD's)

We will be filming the sessions in the Main Auditorium (Hall 1A) and the Second Theatre (Room 3A/B) Tuesday - Thursday. On Monday the sessions will be filmed in Hall 1A, Room 3A and Room 3B. The sessions will be available to view on stations (BOD-POD's) on Stand 548 in the Exhibition Hall.

This will provide an opportunity for you to catch up on sessions that you are not able to attend. Sessions filmed in the morning will be available in the afternoon and sessions filmed in the afternoon will be available the next morning.

### Cloakroom

The Cloakroom is on the Galleria Level (Street Level) and will be available at the following times:

<b>Monday 27 June</b>	0730 - 1930
<b>Tuesday 28 June</b>	0715 - 1945
<b>Wednesday 29 June</b>	0715 - 1800
<b>Thursday 30 June</b>	0800 - 1430

Please notes: There is a charge to delegates for its use of £1 per item/delegate. Personal items may not be left at the BAUS registration desk.

### Continuing Medical Education

This meeting has been accredited with CME points as follows:

<b>Monday 27 June</b>	6 points
<b>Tuesday 28 June</b>	6 points
<b>Wednesday 29 June</b>	6 points
<b>Thursday 30 June</b>	4 points

The Satellite Sessions are each accredited with 1 CME point.

### Delegate Badges

For security purposes all delegates, accompanying persons and exhibitors must wear the official BAUS 2016 delegate badges at all times to be admitted to the conference centre and social events. Badges will be issued from the Registration Desk.

### Exhibition - Location and Opening Hours

The exhibition is in the Hall 2 and will be open at the following times:

<b>Monday 27 June</b>	1200 - 1900
(The welcome drinks reception will be held in the hall between 1800-1845)	
<b>Tuesday 28 June</b>	0830 - 1730
<b>Wednesday 29 June</b>	0830 - 1730
<b>Thursday 30 June</b>	0830 - 1200

Please note: entry to the conference or exhibition is NOT available to personnel from commercial companies who do not have an exhibition stand. All sponsorship for this meeting is acknowledged, including from Pharmaceutical Industry with the presence of exhibition stands. A full list of exhibitors will be listed on the meeting App.



## Prostate Cancer UK Satellite Session

Wednesday 29 June 0745-0845

Hall 1A



### MpMRI before biopsy: Solving the challenge of delivery

Following on from Tuesday's BAUS session on PROMIS and ProtecT, please join Prostate Cancer UK and experts from across the field for what promises to be a lively morning panel and Q&A session exploring how mpMRI before biopsy can be rolled out across the UK.

Chairperson: Roger Kirby, Professor of Urology, Medical Director, The Prostate Centre, London  
Panellists include:

Heather Blake, Prostate Cancer UK, Director of Support and Influencing

Hashim Ahmed, MRC Clinician Scientist and Honorary Consultant Urological Surgeon, University College London Hospitals NHS Foundation Trust and Prostate MRI Imaging Study (PROMIS) Co-principal Investigator

William Cross, Consultant Urologist, Leeds Teaching Hospitals NHS Trust

Philip Haslam, Consultant Interventional and Uroradiologist, Newcastle upon Tyne Hospitals NHS Foundation Trust

Jan van der Meulen, Professor of Clinical Epidemiology, Department of Health Services Research and Policy Faculty of Public Health and Policy London School of Hygiene and Tropical Medicine

Sue Maughn, Clinical Advisor Transforming Cancer services for London and Cancer lead City and Hackney Clinical Commissioning Group

### Prostate Cancer UK Drinks Reception

Tuesday 28 June 1800 – 1930

Venue: The Beatles Story, Britannia Vaults, Albert Dock, Liverpool, L3 4AD

Come along to our ever popular Drinks Reception, this year taking place at the Beatles Story – just a few minutes walk from the BT Convention Centre!

- Network with leading figures in the world of urology
- Meet our new CEO, Angela Culhane
- Hear from Duncan Summerton, Honorary Secretary of BAUS, on the importance of the patient voice
- After seeing our patient videos being played throughout the conference, meet one of our Patients as Educator volunteers and watch our final video
- Find out first hand our plans to drive the urgent changes needed in prostate cancer treatment and care, which will help tame the disease in ten years

We look forward to seeing you there!

Places are for health professionals and limited, please visit stand 200 in the exhibition space to book your place.







## General Information *continued*

### WiFi

1. Enable the wireless function on your device
2. Connect to the Free\_Wifi SSID (wireless network)
3. Browse to a web site of your choice  
eg. [www.accliverpool.com](http://www.accliverpool.com)
4. You will be re-directed to the ACC Liverpool Landing Page
5. Click on the 'FREE WI-FI ACCESS' button
6. The page of your choice will then load.

### Liverpool Tourist Information

This year's hosting city Liverpool is a buzzing hub of entertainment and cultural activity. The city boasts fantastic shopping facilities, a combination of historical and modern architecture and a wealth of bars and restaurants. Liverpool is an important cultural centre within the United Kingdom, incorporating music, performing arts, museums and art galleries, literature and nightlife.

The BT Convention Centre is located on the waterfront and is a stone's throw away from The Albert Dock, which contains the UK's largest collection of Grade I listed buildings as well as being the most visited multi-use attraction outside London.

Liverpool is a premier European visitor destination with global transport connections. With two international airports on the doorstep and just a two hour train journey from central London, it's never been easier to travel to Liverpool City Region.

For extensive travel information, including bus, train and ferry timetables, ticket information, latest travel and transport news plus special promotions visit

[www.merseytravel.gov.uk](http://www.merseytravel.gov.uk) or call Traveline on 0871 200 22 33.

Take a look at [www.visitliverpool.com/whats-on](http://www.visitliverpool.com/whats-on) to find out what's going on in the city and what to see and do.

### Media Check

Media Check-In is located on the upper level balcony and is open at the following times:

<b>Monday 27 June</b>	0700 - 1800
<b>Tuesday 28 June</b>	0730 - 1800
<b>Wednesday 29 June</b>	0730 - 1730
<b>Thursday 30 June</b>	0730 - 1400

### Paper and ePoster Sessions

Full details of the presenters and abstracts will be published in the Final Conference and Scientific Programme and the Abstract Book.

### Prayer Room

A room will be available to delegates throughout the conference for private religious observance and will be clearly signposted.

All Conference content, speakers and timings are correct at time of publication. The Organisers cannot be held responsible for changes due to circumstances beyond their control, including the withdrawal of speakers from the programme, for any reason.

### Registration Desk

All relevant conference documentation should be collected from the BAUS Registration Desk. The desk will be situated outside the Exhibition Hall. It will be open at the following times:

<b>Monday 27 June</b>	0800 - 1800
<b>Tuesday 28 June</b>	0730 - 1700
<b>Wednesday 29 June</b>	0730 - 1630
<b>Thursday 30 June</b>	0800 - 1400

### Satellite Sessions

Satellite Sessions will be held in Hall 1A.

### Scientific Sessions

The Scientific Sessions will be held in Hall 1A and Room 3A/B. The sessions are only open to registered delegates. Please note entry to the conference or exhibition is NOT available to personnel from commercial companies who do not have an exhibition stand.

### Social Media

Follow us @BAUSurology for all conference updates, and join the conversation using the hashtag #BAUS16. Delegates are reminded of the GMC and BMA guidance in respect to social media.

### Travel and Parking

**Liverpool John Lennon Airport** is only nine miles from the city centre, with excellent travel links across the region. Manchester Airport is only 50 minutes from Liverpool, offering many direct long haul routes into the Northwest.

The mainline train station, **Liverpool Lime Street**, is ideally located in the heart of the city centre. Virgin Trains now offer a direct high-speed service from the centre of London in a little over two hours.

#### Liverpool Waterfront Car Park

For delegates travelling to Liverpool by car, there are 1600 spaces in the multi-storey Liverpool Waterfront Car Park. This is located next to Echo Arena provides great value secure parking 24 hours a day and is centrally located on Kings Dock – within walking distance of waterfront attractions and Liverpool city centre.

For more information please visit: [www.visitliverpool.com/travel](http://www.visitliverpool.com/travel)

### Venue

BT Convention Centre, Kings Dock, Waterfront, Liverpool L3 4FP  
United Kingdom

Tel: +44 (0) 44 151 475 8888

Email: [info@accliverpool.com](mailto:info@accliverpool.com)

### 2017 BAUS Annual Meeting

SECC, Glasgow 26-29 June 2017

# Registration Information

## Badge Scanning

This year we will again be using badge scanning as lead retrieval. Exhibitors are able to hire scanners and scan delegate badge barcodes in order to download the following information:

**- Name, Job Title, Place of Work**

(as you specify on your online registration form)

**- Work Email address**

(as you specify on your online registration form)

Badge scanning by exhibitors is not compulsory. **If you DO NOT wish to disclose this information to exhibitors then do not allow your badge to be scanned.** BAUS Staff may scan you on the entrance into sessions but this is purely for a count of attendance at the sessions.

## Cancellations

For both the Conference and the Office of Education Teaching and Skills Courses: **fees cannot be refunded on any cancellations after 31 May 2016.**

## Exhibition-Only Registration

For a small daily fee, health care professionals can register to view the exhibition only (no admittance to conference sessions).

**Exhibition-only registration will not be available on-site.**

## Accompanying Persons - Registration

There is no registration fee for partners of delegates but badges will be issued. Accompanying persons are invited to attend the **Welcome Reception** on Monday 27 June as well as the **Drink Reception** at The Liver Building on Wednesday 29 June. Places for events should be booked in advance on the online registration form. There is no formal Accompanying Persons Programme but please see the social programme for details of the coffee morning at The Pullman Hotel on Tuesday 28 June. Badges for accompanying persons do not permit entry to scientific sessions or teaching and skills courses.

## Non-Exhibiting Company Personnel

**Please note entry to the conference or exhibition is NOT available to personnel from commercial companies who do not have an exhibition stand.**

## From Romans to Robots

### Mr Jonathan Goddard, Curator of the Museum of Urology @ BAUS

BAUS 2016 at Liverpool will once again give delegates plenty of exposure to the fascinating history of urology.

#### From Romans to Robots

This year's theme, "From Romans to Robots" reminds us of the long and rich history of British Urology. The Museum of Urology, hosted on the BAUS website contains over 2000 years of history to explore.



Roman Catheter

The earliest urological surgery in the British Isles was likely to have been

performed by the Romans. They used bronze instruments to carry out perineal lithotomy nearly 2000 years ago. Lithotomy one of the "Capital" operations (i.e. very dangerous!) is the oldest elective operation described. Generations attempted to reduce its morbidity and mortality. In the Eighteenth Century William Cheselden was noted as the finest lithotomist in England, with a mortality rate of 6% in his first 100 patients his fastest time from knife to skin to stone extraction was 54 seconds. The horror of lithotomy drove urologists to seek urethral access to the stones and blind lithotomy was born. Sir Henry Thompson was the English Urologist who excelled at this. Lithotomy was a skill that spawned urology in Britain as a speciality this led to the first Urology Hospital, St Peters.

#### Urology in Liverpool

Liverpool has a long tradition of urology. Reginald Harrison (1837 – 1908) was a renowned urologist working at The Royal Infirmary. His expertise in genito-urinary surgery led to him being head-hunted by St Peter's Hospital for the stone in London in 1889. He was active in Liverpool's Medical School and introduced Britain's first civilian ambulance at the Northern Hospital. Liverpool's Gow Gibbon Urology Department is named after two further famous urology pioneers. James Gow (1917-2001) of Sefton General was a GU TB expert advocating conservative management. He also was the urologist who inspired Harold Hopkins to invent the rod lens system to allow Gow to photograph bladder tumours. Norman Gibbon (1918 – 2008) was a well-known expert on spinal injuries working at the Southport Spinal Injuries Centre after WWII. Recognising the danger of the high-pressure bladder he pioneered sphincterotomy and designed his own catheter.



Reginald Harrison



Gibbon catheter

#### The Museum of Urology Stand

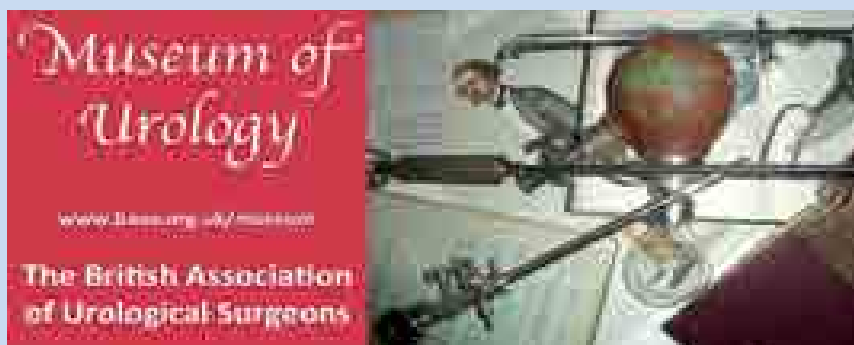
The museum cabinet this year will give a flavour of the long history of British Urology from Romans to Robots with exhibits from the Museum of Urology @BAUS as well as material on Liverpool's Reginald Harrison. Also this year we are delighted to be able to present some short history talks on the stand during the lunch breaks.

#### History of Urology session

The moderated History of Urology poster session promises to be a real treat this year with ten presentations on various topics and spanning different time periods. There is a good mix of historical biography and disease history with a couple of quite different looking stories.

**For those of you who just can't**

**wait until June don't forget to visit The Museum of Urology on the award winning BAUS website.**





# SIU 2016 BUENOS AIRES *Argentina*

36th Congress of the  
Soci t  Internationale d'Urologie

Hilton Buenos Aires

October 20-23, 2016

Featuring the SIU-ICUD Joint Consultation  
on **Urologic Management of the Spinal Cord  
Injured Patient**  
and the **2nd SIU Nurses' Educational Symposium**

## *Why You Should Attend*

- SIU represents a close-knit community of international urologists, and the Congress features world experts presenting the latest and most relevant advancements in urology that YOU need to know about.
- Buenos Aires, known as the "Paris of Latin America", is a vibrant, cosmopolitan, and stylish metropolis.
- The condensed format of SIU Congresses gives you a one-of-a-kind opportunity for more high-quality interactions with leaders in urology.

Register by August 29 and  
*save up to 100 Euros!*



[www.siu-urology.org](http://www.siu-urology.org)



**SIU ACADEMY  
REACHES OVER  
43,000 USERS.  
ARE YOU ONE OF THEM?**



[www.siu-urology.org](http://www.siu-urology.org)

# Social Programme

## Welcome Reception

Exhibition Hall – Hall 2

**Monday 27 June 1800 – 1845**

Time to get together with old friends and colleagues to enjoy a glass of wine. Hosted by Council Members. The dress code is smart/casual. Entry to the reception will be by delegate badge.

## Accompanying Persons

**Tuesday 28 June 1100**

Helen Speakman, the wife of the BAUS President Mr Mark Speakman, invites you to meet her for coffee in the Connectivity Lounge at The Pullman Hotel at 1100. A blue badge will be in attendance to plan your week and arrange a tour of the City.

## Drinks Reception

The Venue at the Liver Building

**Wednesday 29 June 1800-2000.** Generously sponsored by 

This year's social event will be a Drinks Reception at The Liver Building. The reception will take place between 1800 – 2000 on Wednesday 29 June.

Attendance at the reception is £20 for delegates; please book your tickets on the online registration form. The dress code for the reception is smart/casual.

The following Awards will be presented at the Drinks Reception:

### Keith Yeates Medal

The Medal may be awarded each year to the most outstanding candidate at the first sitting of the **Intercollegiate Specialty Examination** in Urology Examination. The Medal was introduced to reward an outstanding performance and is funded by The Royal College of Surgeons of Edinburgh.

**The Ralph Shackman Trust** was established by the late Mrs Ralph Shackman in memory of the contribution to Urology and Renal Transplantation made by her husband, Professor Ralph Shackman. The Trust provides that the winner of The Keith Yeates Medal will be entitled to a Travelling Fellowship of £2,000.

Presented to: **Mr Raj Prasenjit Pal**, Nottingham City Hospital

### Karl Storz Harold Hopkins Golden Telescope Award

This award is given to BAUS Members within 10 years of their first consultant appointment who have made a significant and lasting contribution to urology.

Presented to: **Mr John McGrath**, Royal Devon & Exeter NHS Trust

### BAUS Certificate of Distinction

**The Certificate of Distinction** is awarded to recognise individuals who have had a long and significant relationship with BAUS, its Annual Meeting and, most important, its Annual Exhibition. Recipients of this award will have shown a continuing interest and awareness of the Association and its educational activities.

Presented to:

**Mr Nick Roberts**, Boston Scientific

**Mr Trevor Marsh**, Olympus Medical



# CHARITY 5-A-SIDE FOOTBALL TOURNAMENT AT THE BAUS ANNUAL MEETING, LIVERPOOL

**Monday 27 June**



- The event will run after the Monday programme from 1900-2200 at the Playfootball Liverpool North pitches
  - Teams will represent each region
- As in previous years, we have planned the John Anderson All stars (SPR's) Vs. Old stars match (consultants)
- All attendees to the BAUS congress are welcome to attend and participate in this social event
  - All proceeds will be donated to Urolink





## Satellite Sessions

Each Satellite Session will take place in Hall 1A and has been accredited with 1 CME point

Monday 27 June 1200-1245

### Day-Case GreenLight Laser Surgery – New Nice Guidance



The National Institute for Health and Care Excellence (NICE) recently completed an appraisal of GreenLight laser surgery for the treatment of BPH and recommended it for a broad range of patients. GreenLight laser surgery offers a safe alternative to TURP that can be performed in an ambulatory surgery setting.

But how do you move to day-case BPH treatment? Hear from an expert panel on the cost savings you can generate in your hospital by moving to day-case GreenLight laser therapy and recommendations on setting up a day-case patient pathway from surgeons who have already done this.

#### Introduction

#### The NICE guidance

#### Goliath results: time to stable health

#### Greenlight Daycare experience: the evidence base

#### Moving to Daycare Prostate surgery: my experience

#### Mr Gordon Muir

#### Michael Branagan-Harris

#### Mr Andrew Thomas

#### Mr Gordon Muir

#### Mr Richard Hindley

**Mr Gordon Muir**, Consultant Urological Surgeon: King's College Hospital London

**Mr Andrew Thomas**, Consultant Urological Surgeon Princess of Wales Hospital, Bridgend – Principal Investigator, GOLIATH study

**Mr Richard Hindley**, Consultant Urological Surgeon, Hampshire Hospitals Foundation Trust

**Michael Branagan-Harris**, Expert on Health Economics and NICE MTEP processes

Company Contact: **Glyn Burtt**, Director of Medical Affairs and Medical Education, Boston Scientific Urology and Pelvic Health Division, Europe. Glyn.Burtt@bsci.com +31 6 83 65 44 22

Monday 27 June 1700-1800

### mCRPC: The Fast and Furious Evolution



A buffet will be provided from 16:30

#### Welcome and introduction

**Dr Vijay Sangar**, Consultant Urological Surgeon, The Christie NHS Foundation Trust

#### Optimising the value of earlier treatment in mCRPC

**Dr. Antonio Alcaraz Asensio**, Consultant Urological Surgeon, Hospital Clinic of Barcelona

#### Health-related QoL and treatment satisfaction among patients receiving novel anti-androgen therapies for the treatment of mCRPC

**Dr Sarah Pascoe**, Consultant Clinical Oncologist, Derriford Hospital Plymouth

#### Debate - the future pathway in prostate cancer

**Dr Vijay Sangar, Dr Sarah Pascoe, Dr. Antonio Alcaraz Asensio**

(This meeting is for healthcare professionals only)



## Satellite Sessions

Tuesday 28 June 0745-0845

### Managing mCRPC through a collaborative uro-oncology approach



#### Practical aspects of uro-oncology collaboration in the management of metastatic castration-resistant prostate cancer (mCRPC)

This Astellas Oncology-sponsored symposium will feature a number of presentations looking at the process whereby mCRPC patients may be managed by a urologist, in collaboration with oncology. Astellas products will be discussed at this symposium.

#### Faculty

**Mr Philip Cornford**, Consultant Urologist, Royal Liverpool Hospitals - Chairperson

**Dr Simon Hughes**, Consultant Oncologist, Guy's and St Thomas' Hospitals

**Mr Bill Cross**, Consultant Urologist, Leeds Teaching Hospitals

This symposium is organised and funded by Astellas Pharma Ltd.

Date of preparation: June 2016 XTD16097UKf

Tuesday 28 June 1700-1800

### Overactive Bladder: It's personal!



What do patients want from their doctors, and why do we sometimes fall short with our current approach to managing OAB? How can the choice of treatment and the way we communicate with patients improve the outcome? Join our faculty of urologists and psychologists as we take a look at OAB from a different viewpoint: The patient's perspective

Programme:

#### Welcome from our Chairman:

**Professor Paul Abrams**, Professor of Urology, Bristol

#### Patients: what do they want and why don't they do what we tell them?

**Professor Rob Horne**, Professor of Behavioural Medicine, University College London

#### It's personal: but what does this mean for treatment choice?

**Mr Andrew Sinclair**, Consultant Urologist, Stepping Hill Hospital, Stockport

#### It's professional: how do we need to adapt our approach to managing OAB?

**Professor Paul Abrams**

#### Audience questions

This satellite symposium has been sponsored and organised by Astellas Pharma Ltd.  
URO16120UK| February 2016



## Satellite Sessions

Wednesday 29 June 0745-0845

### MpMRI before biopsy: Solving the challenge of delivery



**Following on from Tuesday's BAUS session on PROMIS and Protect, please join Prostate Cancer UK and experts from across the field for what promises to be a lively morning panel and Q&A session exploring how mpMRI before biopsy can be rolled out across the UK.**

Chairperson: **Roger Kirby**, Professor of Urology, Medical Director, The Prostate Centre, London

Panellists include:

**Heather Blake**, Prostate Cancer UK, Director of Support and Influencing

**Hashim Ahmed**, MRC Clinician Scientist and Honorary Consultant Urological Surgeon, University College London Hospitals NHS Foundation Trust and Prostate MRI Imaging Study (PROMIS) Co-principal Investigator

**William Cross**, Consultant Urologist, Leeds Teaching Hospitals NHS Trust

**Philip Haslam**, Consultant Interventional and Uroradiologist, Newcastle upon Tyne Hospitals NHS Foundation Trust

**Jan van der Meulen**, Professor of Clinical Epidemiology, Department of Health Services Research and Policy Faculty of Public Health and Policy London School of Hygiene and Tropical Medicine

**Sue Maughn**, Clinical Advisor Transforming Cancer services for London and Cancer lead City and Hackney Clinical Commissioning Group

Wednesday 29 June 1630-1730

### The Stone Debate: All you need to know & more

**OLYMPUS**

Stone treatment in the UK is evolving, techniques and methods are continuously developing. With this in mind, are you aware of the latest advancements? From scopes to shockwaves, all will be revealed.

#### Welcome from the Chairman

**Mr Ken Anson**, Consultant Urologist, St George's Hospital

#### Battle of the Scopes: Fibre vs. Video, Disposable vs. Reusable

**Mr Oliver Wiseman**, Consultant Urologist, Addenbrookes Hospital

#### Stone Consumables: The complete line up

**Mr Ben Grey**, Consultant Urologist, Central Manchester Foundation Trust

#### Intracorporeal Lithotripsy: To Fragment or To Dust?

**Mr Matthew Bultitude**, Consultant Urologist, Guy's and St. Thomas' NHS Foundation Trust

#### Q&A & Closing Comments

**Mr Ken Anson**, Consultant Urologist, St George's Hospital

Find out more from the experts and **join the debate**. We look forward to seeing you.

**NEW!**

# Isiris™ α

## MONITOR

HIGH DEGREE OF VISIBILITY  
TRACEABILITY  
EASY USER INTERFACE

## PORTABILITY

## CMOS DIGITAL CAMERA

## SCOPE

EASY INSERTION AND  
HIGH MANEUVRABILITY  
OF THE SCOPE

## A Revolutionary New Solution in your daily stent removal practice

Isiris is the brand new and unique innovative digital solution to remove ureteral stents in one step, anytime, anyplace, anywhere, brought to you by Coloplast. Isiris offers the total independence and autonomy that urology surgeons seek. Isiris reduces time and simplifies the challenges of conventional stent removal within a busy hospital environment. Isiris is a 100% single use device that eliminates the risk of cross contamination, increasing the safety of the procedure.

**LIBERATING . PERFORMING . PROTECTING**

The scope deflection, 90° down and 80° up, allows grasping of the stent in different positions

Grasper specifically designed to catch the double loop ureteral stent efficiently

**For more information come to see us at booth 332**

# Monday 27 June

0800 – 1800  
1200 – 1900Registration Desk Open  
Exhibition Open Hall 20855-1230 &  
1530-1640  
1330-1530Room 3B  
Hall 1A

## BAUS Section of Academic Urology: Annual Meeting

### Introduction:

#### Professor Howard Kynaston, Chairman, BAUS Section of Academic Urology

I am very pleased, on behalf of the Section's Executive Committee, to welcome you to this year's meeting in Liverpool. We are building upon our last two day annual research meeting in December last year which was organised by the committee and in particular, Vincent Gnanapragasam. This was well attended and allowed young researchers an opportunity to present their work. It was also a focal point to highlight national Urology trials, many of which are highly successful in terms of recruitment in the UK.

For BAUS 2016 we are firstly showcasing the very popular 'Best of BAUS' by giving the opportunity to a select group of young researchers who have been chosen by the Abstract Committee to present their work to an audience of critical friends. This is followed by a lecture from the recipients of this year's John Blandy Prize, which I am sure will give credit to Professor Blandy's memory. We are very grateful to the BJU International and its Editor, Prokar Dasgupta, for supporting this first session. This is followed by the announcement of the winners of the competitive medical student essay and CT audit prizes.

The late morning session aims to explore the scientific background of active surveillance in clinically localised prostate cancer. This is such a rapidly changing field and we are fortunate that we have three experts in Pathology, Imaging and Trials to report where the current evidence exists and perhaps where we are going? This session is followed by a prestigious Hunterian Lecture on post prostate biopsy sepsis.

After lunch, the second session, jointly organised by John McGrath and Asif Muneer from the Section of Andrology & Genito-Urethral Surgery, examines scientific and translational research in penile cancer, male infertility and erectile dysfunction with outstanding speakers. This session also focuses on the important and emerging role of dataset linkage in reporting outcomes and how this may help in formulating research in rarer conditions.

We end with the BURST session, where our younger colleagues will again set the scene of a Dragon's Den where candidates can present research ideas to the intellectual scrutiny of a panel of experts. The Academic Section relies on the continuing support of its membership and I would encourage both clinical and scientific colleagues who are not currently members to consider joining and making a contribution. We have an extremely attractive programme in store and look forward to meeting colleagues and discussing future developments during BAUS week.

0855-0900

Room 3B

### Chairman's Introduction

Professor Howard Kynaston, Cardiff University

0900-1000

Room 3B

### Best Academic Paper Session

Chair: Professor Howard Kynaston, Cardiff University

For the Paper abstracts please see page 43

1000-1025

Room 3B

### John Blandy Prize and Lecture

Awarded for the best paper published in the BJUI Journal by a trainee based in the UK or Europe between July 2014 and June 2015

Presented by Professor Prokar Dasgupta, Guy's Hospital, London

Presented to Erik Rud, Oslo University Hospital, Aker Division of Diagnostics and Intervention, Department of Radiology and Nuclear Medicine, Oslo, Norway

## Monday 27 June

1025-1030

Room 3B

### Medical Student Best Essay and Audit Prizes

Presented by **Mr Nick Rukin**, New Cross Hospital, Wolverhampton & **Mr Dominic Hodgson**, Queen Alexandra Hospital, Portsmouth

#### Medical Student Essay Prize Winners:

**Andrew Robinson**, Keele University

**George Miller**, King's College Hospital NHS Foundation Trust (not in attendance)

#### BAUS FY & CT Audit/QuIP Competition Winner:

**Lucie Spooner**, George Eliot Hospital, West Midlands

#### Announcement of the winner of the Best Academic Paper Session

By **Professor Prokar Dasgupta**, Guy's Hospital, London

1030-1045

Refreshment Break

1045-1200

Room 3B

### Active Surveillance in Clinically Localised Prostate Cancer

#### 1045-1050 Introduction

Chair: **Professor Howard Kynaston**, Cardiff University

#### 1050-1110 Grade groups in prostate cancer. The end of Gleason scoring?

**Professor Dan Berney**, Consultant and Professor in Genito-Urinary Pathology at St Bartholomew's and The Royal London Hospitals

#### 1110-1130 All you need for Active Surveillance in Prostate Cancer is mpMRI

**Dr Jonathan Richenberg**, Consultant Radiologist, Royal Sussex County Hospital

#### 1130-1150 Research and Trials in Active Surveillance

**Mr Vincent Gnanapragasam**, Addenbrooke's Hospital

#### 1150-1200 Discussion

1200-1230

Room 3B

### Hunterian Professorship Lecture:

#### The difficulty interpreting endotoxaemia post transrectal prostate biopsy

**Mr Peter Thompson**, King's College Hospital, London

1200-1245

Hall 1A

### Satellite Session – Boston Scientific

Please see page 13 for details



1230-1330

Hall 2 Lunch, Exhibition and ePoster Viewing

## Monday 27 June

1330-1530

Hall 1A

### Section of Academic Urology and Section of Andrology & Genito-Urethral Surgery Joint Session: Molecular Biology and Translational Research in Andrology

Chairs: **Mr Asif Muneer**, University College Hospital, London  
**Mr John McGrath**, Royal Devon & Exeter NHS Trust

1330-1350

#### Molecular Biology and Potential Targeted Treatments in Penile Cancer

**Dr Simon Rodney**, Academic Clinical Fellow in Surgery at The Whittington Hospital & UCLH, London

1350-1420

#### Genetics factors Involved in Male Infertility

**Professor Stéphane Viville**, Laboratoire De Diagnostic Genetique, Nouvel Hôpital Civil, Strasbourg, France

1420-1440

#### Translational Research in ED and Peyronies Disease

**Dr Maarten Albersen**, University Hospital, Leuven, Belgium

1440-1500

#### Maximising research capability in rare conditions

**Dr Steve Nicholson**, Consultant in Medical Oncology & International Study Chair, International Rare Cancers Initiative in Penile Cancer, Royal Free Hospital, London

1500-1520

#### Maximising research capability from national registries - linking the data

**Dr Luke Hounsome**, Analytical Programme Manager, National Cancer Registration and Analysis Service, Public Health England

1520-1530

#### Questions and Answers

1530-1640

Room 3B

### BURST Session: Dragon's Den

Chair: **Mr Ben Lamb**, University College Hospital, London

Panel:

**Dr Graeme MacLennan**, University of Aberdeen

**Mr Ian Pearce**, Manchester Royal Infirmary

**Professor Mark Emberton**, University College Hospital, London

**Mr Veeru Kasivisvanathan**, University College Hospital, London

1640-1700

Hall 2 Refreshments, Exhibition Viewing and ePoster Viewing

1700-1800

Hall 1A

### Satellite Session – Janssen

Please see page 13 for details



# Monday 27 June

0800 – 1800  
1200 – 1900

Registration Desk Open  
Exhibition Open Hall 2

Hall 1A

## BAUS Section of Andrology and Genito-Urethral Surgery: Annual Meeting

### Introduction:

#### **Mr Asif Muneer, Chairman, BAUS Section of Andrology and Genito-Urethral Surgery**

On behalf of the Section's Executive Committee, a warm welcome to this year's meeting in Liverpool. The programme will aim to provide a combination of clinical updates as well as new insights into a number of topical areas within the scope of Andrology and Genitourethral Surgery which will appeal to both consultants and trainees. This year we are delighted to include two joint section meetings which gives the programme a wider appeal.

The meeting opens on Monday with the popular updates session which this year will provide a focussed synopsis of Peyronie's disease and hypogonadism as well as providing an overview of changes in the field of medical and surgical andrology.

Sexual dysfunction in young adult males can be a difficult proposition for the general urologist to manage and hopefully this year's dedicated session will provide guidance in managing these patients. Mr Rowland Rees (newly elected section secretary) will start the session with the difficult subject of managing psychogenic erectile dysfunction in young adults which will be followed by Mr Ian Pearce covering the debatable issue of venous leak and concluding with Mr Suks Minhas providing an insight into sexual dysfunction in the sickle cell population.

After last year's successful inaugural joint session with the European Society for Sexual Medicine (ESSM), this year's ESSM Guest lecture will be given by Mr David Ralph, President of the ESSM, who has a wealth of experience in the surgical management of young adults with genitourethral conditions and will no doubt enlighten us with the surgical pitfalls and reconstructive options in this group of patients.

The afternoon session will begin with the first of our two joint sessions and we start with the Section of Academic Urology and start with an overview of the molecular biology of penile cancer and targeted treatments. We also warmly welcome Professor Stephane Viville from Strasbourg to give his lecture on the genetics of male infertility. With the sparsity of clinical trials for rare diseases, the second half of this session will look at strategies to overcome this. A personal thanks to Professor Howard Kynaston and Mr John McGrath for helping to put this session together.

The day will round off with an extended medicolegal session following on from last year's popular session. Professor Frank Chingwundow is one of a handful of experts providing medicolegal opinions on criminal cases with an andrology slant. This will be followed by a couple of lectures relating to common pitfalls in urological practice involving testicular torsion and vasectomy before Mr Julian Shah brings the day to a close with a selection of cautionary tales which as always will capture the attention of the audience.

On Tuesday afternoon we have the second joint section meeting together with the Section of Oncology and the subject area this year is testicular cancer. We welcome Professor Peter Albers, who has been instrumental in developing EAU guidelines on testicular cancer to give a lecture on RPLND.

During the remainder of the week there are a number of teaching courses relevant to andrology: Genitourinary Trauma and Practical Andrology for the General Urologist and also following on from last year's successful joint session with FNUU, Prosthetic Surgery in Urology will be launched as a new course.

Finally there is a ePoster session on Wednesday afternoon.

The Andrology Section meeting is aimed at both the general urologist, both consultants and trainees as well as those with a specialist interest in andrology to ensure that there is something for everyone. The attendance at the Andrology section meeting continues to grow year on year reflecting the needs of our members to deliver a high quality andrology service.

I hope that you will be able to join us regardless of previous experience or expertise for what is going to be an excellent meeting in Liverpool. See you there!



## Monday 27 June

0900-0915

Hall 1A

### Chairman's Welcome and Introduction to National Audit on Penile Prosthesis

**Mr Asif Muneer**, University College Hospital, London

0915-1030

Hall 1A

### Andrology Updates

Chair: **Mr Asif Muneer**, University College Hospital, London

#### 1. Recent Papers Changing Andrology Practice

**Mr Michael Fraser**, Glasgow Royal Infirmary

#### 2. LiSWT for Erectile Dysfunction

**Mr CJ Shukla**, Western General Hospital, Edinburgh

#### 3. Testosterone and the Aging Male – (Effects on the CVS)

**Mr Ian Eardley**, St James's University Hospital, Leeds

#### 4. Peyronie's Disease

**Mr Oliver Kayes**, St James's University Hospital, Leeds

#### 5. The Future of Andrology Services in the NHS

**Mr Vijay Sangar**, The Christie Hospital, Manchester

1030-1130

Hall 1A

### Sexual Dysfunction in Young Men

Chairs: **Mr Marc Lucky**, University Hospital Aintree and **Mr Paul Anderson**, Russells Hall Hospital, Dudley

1030-1050

#### Investigation and Management of Psychogenic Erectile Dysfunction in Young Men

**Mr Rowland Rees**, University Hospital Southampton

1050-1110

#### 'Venous Leak' – A Diagnostic and Therapeutic Challenge

**Mr Ian Pearce**, Manchester Royal Infirmary

1110-1130

#### Living with Sickle Cell Disease – Impact on Sexual Health and Fertility

**Mr Suks Minhas**, University College Hospital, London

1130-1200

Hall 1A

### ESSM Guest Lecture

Introduced by **Mr Rowland Rees**, University Hospital Southampton

### Complex Penile Reconstructive Surgery in Young Adults

**Mr David Ralph**, President ESSM & University College Hospital, London

Monday 27 June

1200-1245 Hall 1A **Satellite Session**

## Day-Case GreenLight Laser Surgery – New Nice Guidance



The National Institute for Health and Care Excellence (NICE) recently completed an appraisal of GreenLight laser surgery for the treatment of BPH and recommended it for a broad range of patients. GreenLight laser surgery offers a safe alternative to TURP that can be performed in an ambulatory surgery setting. But how do you move to day-case BPH treatment? Hear from an expert panel on the cost savings you can generate in your hospital by moving to day-case GreenLight laser therapy and recommendations on setting up a day-case patient pathway from surgeons who have already done this.

### Introduction

### The NICE guidance

### Goliath results: time to stable health

### Greenlight Daycare experience: the evidence base

### Moving to Daycare Prostate surgery: my experience

**Mr Gordon Muir**

**Michael Branagan-Harris**

**Mr Andrew Thomas**

**Mr Gordon Muir**

**Mr Richard Hindley**

**Mr Gordon Muir**, Consultant Urological Surgeon: King's College Hospital London

**Mr Andrew Thomas**, Consultant Urological Surgeon Princess of Wales Hospital, Bridgend – Principal Investigator, GOLIATH study

**Mr Richard Hindley**, Consultant Urological Surgeon, Hampshire Hospitals Foundation Trust

**Michael Branagan-Harris**, Expert on Health Economics and NICE MTEP processes

Company Contact: **Glyn Burtt**, Director of Medical Affairs and Medical Education, Boston Scientific Urology and Pelvic Health Division, Europe. Glyn.Burtt@bsci.com +31 6 83 65 44 22

1200-1330 Hall 2 Lunch and Exhibition Viewing

1330-1530 Hall 1A

## Section of Academic Urology and Section of Andrology & Genito-Urethral Surgery Joint Session: Molecular Biology and Translational Research in Andrology

Chairs: **Mr Asif Muneer**, University College Hospital, London

**Mr John McGrath**, Royal Devon & Exeter NHS Trust

1330-1350 **Molecular Biology and Potential Targeted Treatments in Penile Cancer**  
**Dr Simon Rodney**, Academic Clinical Fellow in Surgery at The Whittington Hospital & UCLH, London

1350-1420 **Genetic Factors Involved in Male Infertility**  
**Professor Stéphane Viville**, Laboratoire De Diagnostic Genetique, Nouvel Hôpital Civil, Strasbourg, France

1420-1440 **Translational Research in ED and Peyronies Disease**  
**Dr Maarten Albersen**, University Hospital, Leuven, Belgium

1440-1500 **Maximising research capability in rare conditions**  
**Dr Steve Nicholson**, Consultant in Medical Oncology & International Study Chair, International Rare Cancers Initiative in Penile Cancer, Royal Free Hospital, London

## Monday 27 June

1500-1520 **Maximising research capability from national registries - linking the data**

**Dr Luke Hounsome**, Analytical Programme Manager, National Cancer Registration and Analysis Service, Public Health England

1520-1530 **Questions and Answers**

1530-1700 Hall 1A

### Medicolegal Aspects in Andrology

Chairs: **Mr Duncan Summerton**, Leicester General Hospital  
**Mr Ian Eardley**, St James's University Hospital, Leeds

1530-1600 **Forensic Andrology – Sexual Abuse, The Law and the Andrologist**

**Professor Frank Chinegwundoh**, Barts Health NHS Trust, Royal London Hospital

1600-1620 **Testicular Torsion – Who Should Manage it and Where?**

**Mr Mark Speakman**, Taunton & Somerset NHS Trust

1620-1640 **The Pitfalls of Vasectomy and Implications of New Guidelines**

**Mr Raj Nigam**, Royal Surrey County Hospital, Guildford

1640-1700 **Surgery and the Penis - Cautionary Tales**

**Mr Julian Shah**, University College Hospital, London

1700-1800 Hall 1A **Satellite Session**

## mCRPC: The Fast and Furious Evolution



A buffet will be provided from 16:30

### Welcome and introduction

**Dr Vijay Sangar**, Consultant Urological Surgeon, The Christie NHS Foundation Trust

### Optimising the value of earlier treatment in mCRPC

**Dr. Antonio Alcaraz Asensio**, Consultant Urological Surgeon, Hospital Clinic of Barcelona

### Health-related QoL and treatment satisfaction among patients receiving novel anti-androgen therapies for the treatment of mCRPC

**Dr Sarah Pascoe**, Consultant Clinical Oncologist, Derriford Hospital Plymouth

### Debate - the future pathway in prostate cancer

**Dr Vijay Sangar, Dr Sarah Pascoe, Dr. Antonio Alcaraz Asensio**

(This meeting is for healthcare professionals only)

# Monday 27 June

Room 3A

## BAUS Section of Female, Neurological and Urodynamic Urology: Annual Meeting

### Introduction:

#### Tamsin Greenwell, Chairman, Section of Female, Neurological and Urodynamic Urology

I am delighted to welcome you to FNUU at BAUS 2016. The FNUU Section Committee (Roger Walker, Roland Morley, Chris Harding, Nikesh Thiruchelvam, Mary Garthwaite, Sheilagh Reid, Richard Parkinson and Sophia Cashman) are delighted to present a topical, thought-provoking, at times controversial and above all educational update in FNUU for generalists and specialists alike.

Monday's Section Annual Meeting will discuss key Medicolegal Aspects of FNUU practice. Three medico-legal giants (John Reynard, Mark Slack and Chris Chapple) will guide us to a better understanding of the pitfalls of management of Cauda Equina, Synthetic Mid-Urethral Tapes and Urinary Tract Fistulae. An Updates Session follows this from the FNUU triumvirate; Sheilagh Reid will discuss Specialist Unit Recognition, Richard Parkinson will talk about Specialist Commissioning and Mahreen Pakzad will explore the subject of Anticholinergic Burden.

After lunch there will be an exciting Point-Counterpoint session chaired by our overseas guest Professor Margit Fisch and our recent outgoing Chairman Roland Morley on Lower Urinary Tract Reconstruction for Benign and Malignant Disease. Charlotte Foley, Mary Garthwaite, Mo Belal and Dan Wood will be making the case for Ileal Conduit, Orthotopic Neobladder, Continent Diversion and Ureterosigmoidostomy respectively. Following this Daron Smith and Tamsin Greenwell will discuss the Endoscopic and Open Management of Ureteric Injury and Strictures – an increasingly common problem for us all.

Finally this year sees the retirements of 2 legends of FNUU: Paul Tophill, one of our most renowned Neuro-Urologists, and Tim Terry eminent Female and Male Reconstructive Urologist and Educationalist. We are delighted to invite them to end our amazing Monday with talks on their Lives' in Neuro-Urology and, Female and Reconstructive Urology respectively.

If you can cope with more FNUU excitement the main session on Tuesday morning covers the highly topical subject of the management of functional side effects of pelvic cancer radiotherapy treatment. Majid Shabbir, Nikesh Thiruchelvam, Margit Fisch and Tasla Malinowski of Prostate Cancer UK will talk us through the management of sexual dysfunction, urinary incontinence, urinary tract fistulae and survivorship in general.

The Tuesday afternoon will be devoted to the role of the Urologist in the Management of Painful Bladder Syndrome. Suzanne Biers will summarise current evidence based guidelines, Mary Garthwaite will detail current management strategies, Sachin Malde will suggest a perhaps controversial new pathway and finally chairs Suzie Venn and Ruth Doherty will involve the audience to come up with a unified strategy for the role of the Urologist in this difficult condition.

Finally we would like to thank Astellas Pharma Ltd for its continuing support of the section meeting

0900-0905

Room 3A

### Introduction

**Miss Tamsin Greenwell**, University College Hospital, London

0905-1045

Room 3A

### Medicolegal Aspects of FNUU Practice

Chair: **Mr Jeremy Ockrim**, University College Hospital, London

0905-0930

### Cauda Equina

**Mr John Reynard**, The Churchill Hospital, Oxford

## Monday 27 June

- 0930-0955 **Mid Urethral Synthetic Tapes**  
**Dr Mark Slack**, Consultant Gynaecologist and Urogynaecologist, Addenbrooke's Hospital, Cambridge
- 0955-1025 **Urinary Tract Fistulae**  
**Professor Chris Chapple**, The Royal Hallamshire Hospital, Sheffield Teaching Hospitals
- 1025-1045 **Questions and Answers**

### 1045-1100 Refreshment Break

- 1100-1130 Room 3A  
**Updates**  
Chair: **Mr Ian Beckley**, Pinderfields Hospital, Wakefield & **Miss Angela Birnie**, Queen Alexandra, Portsmouth
- 1100-1115 1. **New Curriculum/Nice Update**  
**Ms Sheilagh Reid**, Royal Hallamshire Hospital, Sheffield
- 1115-1130 2. **Specialist Unit Recognition and Specialist Commissioning**  
**Mr Richard Parkinson**, Nottingham City Hospital
- 1130-1200 Room 3A  
**Anticholinergic Burden**  
**Mrs Mahreen Pakzad**, University College Hospital, London

- 1200-1245 Hall 1A  
**Satellite Session – Boston Scientific**  
Please see page 13 for details



### 1200-1300 Hall 2 Lunch and Exhibition Viewing

- 1300-1420 Room 3A  
**Lower Urinary Tract Reconstruction for Benign and Malignant Disease: Point/Counterpoint**  
Chairs: **Professor Margit Fisch**, University Medical Centre Hamburg-Eppendorf, Germany  
**Mr Roland Morley**, Charing Cross Hospital, London
- 1300-1320 1. **Ileal Conduit**  
**Miss Charlotte Foley**, The Lister Hospital, Stevenage
- 1320-1340 2. **Orthotopic Neobladder**  
**Miss Mary Garthwaite**, James Cook University Hospital, Middlesbrough
- 1340-1400 3. **Continent Diversion**  
**Mr Mo Belal**, Queen Elizabeth Hospital, Birmingham
- 1400-1420 4. **Ureterosigmoidostomy**  
**Mr Dan Wood**, University College Hospital, London

## Monday 27 June

1420-1500 Room 3A  
**Management of Ureteric Injuries**  
Chair: **Mr Rajesh Kavia**, Northwick Park Hospital, Harrow

1420-1440 1. **Endoscopic**  
**Mr Daron Smith**, University College Hospital, London

1440-1500 2. **Open**  
**Miss Tamsin Greenwell**, University College Hospital, London

1500-1520 Hall 2 Refreshments, Exhibition Viewing and ePoster Viewing

1520-1540 Room 3A  
**Retirement Lecture: A Lifetime in Neurourology**  
By **Mr Paul Tophill**, Northern General Hospital, Sheffield  
Introduced by **Ms Sheilagh Reid**, Royal Hallamshire Hospital, Sheffield

1540-1600 Room 3A  
**Retirement Lecture: A Lifetime In Female and Reconstructive Urology**  
By **Professor Tim Terry**, Leicester General Hospital  
Introduced by **Miss Tamsin Greenwell**, University College Hospital, London

1600-1700 Room 3A  
**Business Meeting**

1700-1800 Hall 1A  
**Satellite Session – Janssen**  
Please see page 13 for details



## Tuesday 28 June

0730 – 1700 Registration Desk Open  
0830 – 1700 Exhibition Open Hall 2

0745-0845 Hall 1A **Satellite Session**

### Managing mCRPC through a collaborative uro-oncology approach



#### Practical aspects of uro-oncology collaboration in the management of metastatic castration-resistant prostate cancer (mCRPC)

This Astellas Oncology-sponsored symposium will feature a number of presentations looking at the process whereby mCRPC patients may be managed by a urologist, in collaboration with oncology. Astellas products will be discussed at this symposium.

#### Faculty

**Mr Philip Cornford**, Consultant Urologist, Royal Liverpool Hospitals - Chairperson

**Dr Simon Hughes**, Consultant Oncologist, Guy's and St Thomas' Hospitals

**Mr Bill Cross**, Consultant Urologist, Leeds Teaching Hospitals

This symposium is organised and funded by Astellas Pharma Ltd.

Date of preparation: June 2016 XTD16097UKf

0845-0945

Hall 1A

### Promis and ProtecT: UK in the vanguard for Prostate Cancer clinical trials

Chairs: **Mr Vincent Gnanapragasam**, Addenbrooke's Hospital, Cambridge  
**Professor Alan McNeill**, Western General Hospital, Edinburgh

#### ProtecT

**Professor Freddie Hamdy**, Nuffield Dept of Surgical Sciences, University of Oxford

#### Promis

**Professor Mark Emberton**, Division of Surgery and Interventional Science, University College Hospital, London

0945-1045

Hall 1A

### President's Address and Presentation of the John Anderson Award, St Peter's Medal and Lecture

**Mr Mark Speakman**, Taunton & Somerset NHS Trust & BAUS President

#### President's Address

**Mr Mark Speakman**, Taunton & Somerset NHS Trust & BAUS President

#### John Anderson Award

This award was instigated by John's family and BAUS to recognise an outstanding trainee or consultant. The selection criteria are based around a single outstanding event and/or consistent commitment to high quality patient care. The Panel making the award included Mrs Sarah Anderson.

Presented to: **Mr Ans Khan**, Wishaw General Hospital, Lanarkshire



## Tuesday 28 June

### St Peter's Medal 2016

The St. Peter's Medal is awarded to any subject of the British Isles or Commonwealth who has made a notable contribution to the advancement of urology. Mr Bernard Ward (Vice President, 1945-1947) presented the Association with the die for the medal in 1948.

Presented to: **Professor Margaret Knowles**, Head of Section of Molecular Oncology, Leeds Institute of Cancer and Pathology, St James's University Hospital

### Lecture: Bladder Cancer Research in 2016 – where are we now?

#### 1045-1100 Refreshment Break, Exhibition and ePoster Viewing

1045-1215 Room 4

#### ePoster Session 1 - Endourology

Chairs: **Jake Patterson** & **Marius Conradie**

For the ePoster abstracts please see page 45

1045-1215 Room 12

#### ePoster Session 2 - Bladder Cancer Management Shifting Sands

Chairs: **Jon Aning** & **John McGrath**

For the ePoster abstracts please see page 45

1100-1230 Hall 1A

### Congenital Lifelong Urology

Chair and Moderator: **Mr Dan Wood**, University College Hospital, London

#### 1100-1105 Introduction and Overview

**Mr Dan Wood**, University College Hospital, London

#### 1105-1115 Case Studies

#### 1115-1125 Preparation for transition

**Mr Alun Williams**, Consultant Paediatric / Adolescent Urologist & Transplant Surgeon, Nottingham University Hospitals

#### 1125-1135 The adolescent brain and the challenge of transition

**Dr Jo Begent**, Consultant in Adolescent Medicine, University College Hospital, London

#### 1135-1145 The route to success – setting up a service

**Miss Claire Taylor**, Adolescent Urologist Guy's Hospital, London

#### 1145-1155 The adult care of major congenital urological anomalies

**Mr Andrew Baird**, University Hospital Aintree NHS Foundation Trust, Liverpool

#### 1155-1205 Andrological concerns - Fertility, sexual function and late effects

**Mr Suks Minhas**, University College Hospital, London

#### 1205-1230 The surgical challenges in adolescent urology

**Dr Hadley M Wood, MD, FACS**, Staff, Center for Genitourinary Reconstruction, Glickman Urological and Kidney Institute, Cleveland Clinic, USA



## Tuesday 28 June

1100-1230 Room 3A/B  
**Management of the Functional Side-Effects of Pelvic Cancer Radiotherapy Treatment (Male and Female)**  
 Chair: **Mr Arun Sahai**, Guy's Hospital, London & **Miss Sophia Cashman**, Bedford Hospital, East of England

1100-1120 **Sexual Function**  
**Mr Majid Shabbir**, Guy's & St Thomas' Hospital, London

1120-1140 **Urinary Incontinence**  
**Mr Nikesh Thiruchelvam**, Addenbrooke's Hospital, Cambridge

1140-1200 **Fistula**  
**Professor Margit Fisch**, University Medical Centre Hamburg-Eppendorf

1200-1220 **Survivorship**  
**Tasia Malinowski**, Health and Social Care Professionals Programme Manager, Prostate Cancer UK

1220-1230 **Questions and Answers**

1230-1250 Hall 1A  
**BAUS Guest Lecture (pre-recorded lecture)**  
 Introduced by **Mr Mark Speakman**, Taunton & Somerset NHS Trust & BAUS President

**Medecins Sans Frontieres**  
**Mr David Nott**, Consultant General and Vascular Surgeon at Imperial College Healthcare NHS Trust

David Nott regrets that he is unable to attend BAUS to give the Guest Lecture as he has been called away on a mission. Instead he has kindly sent a pre-recording of a previous lecture. Given the nature of David's work and the impact of it has on the lives of people in areas of conflict, we believe that this will be of real interest to delegates.

For the past 22 years, David has volunteered his surgical skills to operate and teach local surgeons in areas of conflict and catastrophe. He is the past director of the definitive surgical trauma skills course at the Royal College of Surgeons of England and now is the director of the surgical training for the austere environment course which trains surgeons from around the world at the College the skills and decision making to work in these areas. He also has his own foundation which pays for surgeons to come to the UK and also has a satellite course which teaches surgeons on the front line.

### 1250-1430 Lunch, Exhibition and ePoster Viewing

1250-1350 Hall 1A  
**Urolink: Building sustainable bridges - linking urology training and care in Africa**

Chair: **Mr Phil Thomas**, Royal Sussex County Hospital, Brighton

**Lancet Commission on Global Surgery**  
**Mr Phil Thomas**, Royal Sussex County Hospital, Brighton

**Observations from Urolink visit to Ethiopia**  
**Mr Zeeshan Aslam**, SpR, Morrision Hospital, Swansea

**Thoughts on KCMC visit**  
**Mr Chris Parker**, Yeovil District Hospital

**MSE course - Teaching the management of Urological emergencies**  
**Mr Nick Campain**, SpR, Torbay District Hospital

**Urethroplasty workshop, Lusaka**  
**Mr Paul Anderson**, Russells Hall Hospital, Dudley

## Tuesday 28 June

- 1400-1530 Room 4  
**ePoster Session 3 – Prostate Cancer Diagnosis: An Evolving Journey**  
 Chairs: **Miles Walkden** and **Prasanna Sooriakumaran**  
 For the ePoster abstracts please see page 46
- 1430-1530 Hall 1A  
**Section of Andrology and Genito-Urethral Surgery & Section of Oncology Joint Session - Testicular Cancer and Sexual Dysfunction**  
 Chairs: **Mr Asif Muneer**, University College Hospital, London  
**Mr Tim O'Brien**, Guy's Hospital, London
- Testis Tumours and Fertility Preservation**  
**Mr Majid Shabbir**, Guy's & St Thomas' Hospital, London
- RPLND: Optimising Cancer Outcomes and Preservation of Ejaculatory Function: Where are we now?**  
**Professor Peter Albers**, Düsseldorf University Hospital, Germany
- RPLND in the UK: How are we doing?**  
**Mr Matt Hayes**, University Hospital Southampton
- 1430-1545 Room 12  
**ePoster Session 4 – Education and Managing Urological Practice**  
 Chairs: **Kieran O'Flynn** and **Richard Robinson**  
 For the ePoster abstracts please see page 47
- 1530-1630 Hall 1A  
**The role of Urology in the Management of Painful Bladder Syndrome in the UK 2016**  
 Chairs: **Mrs Suzie Venn**, St Richard's Hospital, Chichester  
**Mrs Ruth Doherty**, Norfolk & Norwich University Hospital
- 1530-1545 **The Evidence and Guidelines**  
**Miss Suzanne Biers**, Addenbrooke's Hospital, Cambridge
- 1545-1600 **What do we do now?**  
**Miss Mary Garthwaite**, James Cook University Hospital, Middlesbrough
- 1600-1615 **An Alternative Way to Manage BPS Patients**  
**Mr Sachin Malde**, University College Hospital, London
- 1615-1630 **What do you think we should do?**
- 1610-1630 **Questions and Answers**
- 1530-1630 Room 3A/B  
**Lap v Robot: Partial Nephrectomy - Videos & Discussion**  
 Chair: **Mr Richard Napier-Hemy**, Manchester Royal Infirmary
- Lap**  
**Mr Jon Cartledge**, St James's University Hospital, Leeds



## Tuesday 28 June

### Robot

**Mr Ben Challacombe**, Guy's Hospital, London

### Trainee perspective

**Miss Laura Derbyshire**, Salford Royal NHS Foundation Trust

### View from The USA

**Dr Matthew T Gettman**, Mayo Clinic, Rochester, USA

1630-1700 Hall 2 Refreshments, Exhibition Viewing and ePoster Viewing

1700-1800 Hall 1A **Satellite Session**

## Overactive Bladder: It's personal!



What do patients want from their doctors, and why do we sometimes fall short with our current approach to managing OAB? How can the choice of treatment and the way we communicate with patients improve the outcome? Join our faculty of urologists and psychologists as we take a look at OAB from a different viewpoint: The patient's perspective

Programme:

### Welcome from our Chairman:

**Professor Paul Abrams**, Professor of Urology, Bristol

### Patients: what do they want and why don't they do what we tell them?

**Professor Rob Horne**, Professor of Behavioural Medicine, University College London

### It's personal: but what does this mean for treatment choice?

**Mr Andrew Sinclair**, Consultant Urologist, Stepping Hill Hospital, Stockport

### It's professional: how do we need to adapt our approach to managing OAB?

**Professor Paul Abrams**

### Audience questions

This satellite symposium has been sponsored and organised by Astellas Pharma Ltd.  
URO16120UK| February 2016

1800-1930 Room 3A/B

## Meeting of SURG and BAUS Trainee Members

Chair: **Mr Richard Robinson**, Central Manchester University Hospitals NHS Foundation Trust & Chair of SURG

### Award of the Silver Cystoscope - Sponsored by Karl Storz Endoscopy UK

**Professor Rob Pickard**, Freeman Hospital, Newcastle-upon-Tyne

### From trainee to consultant- smoothing the transition

**Mr Peter Acher**, Southend University Hospital & **Mr James Armitage**, Addenbrooke's Hospital, Cambridge

### Trainee Debate - This house believes that urology training should recruit at ST1 into run-through training

**Mr Raj Pal**, Royal Derby Hospital

**Miss Emma Baston**, Wigan, Wrightington and Leigh Hospital

### The 2020 view of Urology Training

**Mr Roland Morley**, Charing Cross Hospital, London & Chair of the SAC in Urology

# Wednesday 29 June

0730 – 1630 Registration Desk Open  
0830 – 1730 Exhibition Open Hall 2

0745-0845 Hall 1A **Satellite Session**

## MpMRI before biopsy: Solving the challenge of delivery



Following on from Tuesday's BAUS session on PROMIS and Protect, please join Prostate Cancer UK and experts from across the field for what promises to be a lively morning panel and Q&A session exploring how mpMRI before biopsy can be rolled out across the UK.

Chairperson: **Roger Kirby**, Professor of Urology, Medical Director, The Prostate Centre, London

Panellists include:

**Heather Blake**, Prostate Cancer UK, Director of Support and Influencing

**Hashim Ahmed**, MRC Clinician Scientist and Honorary Consultant Urological Surgeon, University College London Hospitals NHS Foundation Trust and Prostate MRI Imaging Study (PROMIS) Co-principal Investigator

**William Cross**, Consultant Urologist, Leeds Teaching Hospitals NHS Trust

**Philip Haslam**, Consultant Interventional and Uroradiologist, Newcastle upon Tyne Hospitals NHS Foundation Trust

**Jan van der Meulen**, Professor of Clinical Epidemiology, Department of Health Services Research and Policy Faculty of Public Health and Policy London School of Hygiene and Tropical Medicine

**Sue Maughn**, Clinical Advisor Transforming Cancer services for London and Cancer lead City and Hackney Clinical Commissioning Group

0845-0900 Hall 1A

### NPCA Audit Update

Presented by: **Professor Noel Clarke**, Christie Hospital, Manchester

With contribution from: **Mr Arunan Sujenthiran**, NPCA Clinical Research Fellow & North Middlesex University Hospital

0900-1000 Hall 1A

### Controversies in Stone Disease

Chairs: **Mr Peter Rimington**, Eastbourne District General Hospital

**Mr Jonathan Glass**, Guy's & St Thomas' Hospital, London

#### Digital vs Fibreoptic

**Mr Sri Sriprasad**, Darent Valley Hospital, Dartford vs **Mr Ben Grey**, Manchester Royal Infirmary

#### Wire vs Wireless

**Mr Daron Smith**, University College Hospital, London vs **Mr Jake Patterson**, Royal Hallamshire Hospital, Sheffield

#### Fragment vs Dust

**Mr Nick Rukin**, New Cross Hospital, Wolverhampton vs **Mr Rob Calvert**, Broadgreen Hospital, Liverpool

#### Access Sheath: Yes vs No

**Mr Alistair Rogers**, Freeman Hospital, Newcastle upon Tyne vs **Mr Nitin Shrotri**, Kent & Canterbury Hospital

1000-1030 Hall 1A

## The Urology Foundation Guest Lecture & Presentation of the Research Scholar Medal

### The Urology Foundation Research Scholarship Medal

This award is issued for an outstanding application to TUF's Research Scholarship Programme. Judged by the Foundation's Scientific and Education Committee and the Reviewing Committee, the award is given to the highest scoring research proposal.

Presented by **Professor Howard Kynaston**, Cardiff University

Presented to: **Mr Prasanna Sooriakumaran**, Churchill Hospital, Oxford

## Wednesday 29 June

### Guest Lecture: Hazards and Heroes: the search for safer surgery

**Tony Giddings**

#### 1030-1100 Refreshments, Exhibition Viewing and ePoster Viewing

1030-1215 Room 4

### ePoster Session 5 – Female Urology and Bladder Dysfunction

Chairs: **Claire Taylor** & **Marco Spilotros**

For the ePoster abstracts please see page 48

1030-1200 Room 12

### ePoster Session 6 – Renal and Testis Cancer: Organ Sparing and Reducing Morbidity

Chairs: **Axel Bex** & **Maxine Tran**

For the ePoster abstracts please see page 49

1100-1200 Hall 1A

### Major Urological Trauma and the MTCs

Chair: **Mr Mark Speakman**, Taunton & Somerset NHS Trust & BAUS President

#### Major Trauma Networks: the new system in England

**Professor Chris Moran**, National Clinical Director for Trauma, Professor of Orthopaedic Trauma Surgery Nottingham University Hospital

#### Urethral Trauma Guidelines

**Mr Mark Speakman**, Taunton & Somerset NHS Trust & BAUS President

#### Renal Trauma

**Mr Davendra Sharma**, St George's Healthcare NHS Trust

1100-1200 Room 3A/B

### Centralisation of Stone Services

Chair: **Mr Ken Anson**, St George's Hospital, London

#### Review of PCNL database

**Mr Oliver Wiseman**, Addenbrooke's Hospital, Cambridge

**Mr John Withington**, Whittington Hospital, London

#### Central v Local Services

**Mr Simon Harrison**, Pinderfields General Hospital, Wakefield

#### NHS Centralisation

**Mr Duncan Selbie**, Chief Executive, Public Health England

#### Go Central

**Mr Paul Jones**, Morriston Hospital, Swansea

#### Stay Local

**Mr Stephen Gordon**, Epsom & St. Helier University Hospitals NHS Trust

1200-1230 Room 3A/B

### MET – is there a role? US view vs UK view

Chair: **Miss Kay Thomas**, Guy's and St Thomas' Hospital

#### Yes

**Assistant Professor John Hollingsworth**, University of Michigan, USA

#### No

**Professor Sam McClinton**, Aberdeen Royal Infirmary

## Wednesday 29 June

1200-1230

Hall 1A

### **BJU International Guest Lecture**

Introduced by **Professor Krishna Sethia**, Chairman, BJU

#### **Novel non-coding RNAs as biomarkers and molecular regulators in prostate cancer**

**Professor Manfred Wirth**, University Hospital Carl Gustav Carus, Technical University of Dresden, Germany

1230-1315

Hall 1A

### **Gold Medal, St Paul's Presentation and Lecture, AGM and Presidential Handover**

Chair: **Mr Mark Speakman**, Taunton & Somerset NHS Trust & BAUS President

#### **Gold Medal**

The BAUS Gold Medal was instituted by BAUS Council in 2008 and is awarded to an individual or individuals who have contributed to the development and advancement of urology as a corporate entity.

Presented to: **Mr Tim Terry**, Leicester General Hospital

#### **St Paul's Medal**

The St. Paul's Medal is awarded by BAUS Council to distinguished colleagues from overseas whose contributions to BAUS in particular, or to urology in general, Council particularly wishes to appreciate and honour. **Mr Richard Turner Warwick** (President, 1988-1990) presented the Association with the die for the medal in 1989.

Presented to: **Professor Joseph A. Smith**, Vanderbilt University, Nashville, USA

#### **Lecture: Will the urologic oncologist of the future be a surgeon?**

#### **AGM**

The AGM agenda is in delegate bags. Any other business – if possible, written questions should be submitted in advance of the AGM or handed to the Registration Desk by 1030 on Tuesday 28 June

#### **Presidential Handover**

Investiture of **Mr Kieran O'Flynn** as President of BAUS

1230-1400

Lunch, Exhibition and ePoster Viewing

1330-1445

Room 3A/B

### **ePoster Session 7 – Surgical Andrology (Urethral and Penile) and Infertility**

Chairs: **Tim Terry** and **Vaibhav Modgil**

For the ePoster abstracts please see page 50

1330-1515

Room 4

### **ePoster Session 8 – General Urology**

Chairs: **Gurpreet Singh** and **Rajeev Sood**

For the ePoster abstracts please see page 50

1400-1530

Hall 1A

### **Radical thinking for Metastatic Urological Cancer**

Chairs: **Ms Jo Cresswell**, James Cook University Hospital  
**Professor Noel Clarke**, Christie Hospital, Manchester

#### **Metastatic Disease from Biology to Treatment: New Thinking**

**Professor Noel Clarke**, Christie Hospital, Manchester



## Wednesday 29 June

### PD-L1 Inhibitors in Metastatic Bladder Cancer: A game changer?

**Professor Thomas Powles**, Clinical Professor of Genitourinary Oncology (HCC), Bart's Health NHS Trust

### Surgery for Metastatic Renal Cancer: What do we know?

**Dr Axel Bex**, Netherlands Cancer Institute, Amsterdam, The Netherlands

### Targeted Radiotherapy for Oligometastatic Prostate Cancer: Developing at PACE

**Dr Nicholas van As**, Medical Director and Consultant Clinical Oncologist, The Royal Marsden, London

### Surgery for Oligometastatic Prostate Cancer: Hype or Reality

**Mr Anthony Koupparis**, Southmead Hospital, Bristol

1430-1530

Room 12

### ePoster Session 9 – History of Urology

Chairs: **Jonathan Goddard** & **Nick Gill**

For the ePoster abstracts please see page 51

1530-1600

Hall 1A

### JCU Guest Lecture

Introduced by: **Mr Ian Pearce**, Manchester Royal Infirmary

### From Bed to Benchside

**Mr Justin Vale**, Founding Editor of the JCU & Imperial College Healthcare Trust, London

1600-1630

Refreshment Break, Exhibition and ePoster Viewing

1630-1730

Hall 1A **Satellite Session**

## The Stone Debate: All you need to know & more



Stone treatment in the UK is evolving, techniques and methods are continuously developing. With this in mind, are you aware of the latest advancements? From scopes to shockwaves, all will be revealed.

### Welcome from the Chairman

**Mr Ken Anson**, Consultant Urologist, St George's Hospital

### Battle of the Scopes: Fibre vs. Video, Disposable vs. Reusable

**Mr Oliver Wiseman**, Consultant Urologist, Addenbrookes Hospital

### Stone Consumables: The complete line up

**Mr Ben Grey**, Consultant Urologist, Central Manchester Foundation Trust

### Intracorporeal Lithotripsy: To Fragment or To Dust?

**Mr Matthew Bultitude**, Consultant Urologist, Guy's and St. Thomas' NHS Foundation Trust

### Q&A & Closing Comments

**Mr Ken Anson**, Consultant Urologist, St George's Hospital

Find out more from the experts and **join the debate**. We look forward to seeing you.

# Thursday 30 June

0800 – 1400 Registration Desk Open

0830 – 1200 Exhibition Open Hall 2

0915-1015

Hall 1A

## AUA and BAUS Session

Moderators: **Mr Mark Speakman**, Taunton & Somerset NHS Trust & BAUS President  
**Dr William F. Gee**, AUA Immediate Past President

0915-0920

## Welcome Message

**Mr Mark Speakman**, Taunton & Somerset NHS Trust & BAUS President

0920-0940

## US HealthCare Reform: Getting closer to the NHS?

**Dr William F. Gee**, AUA Immediate Past President

0940-0955

## Case Discussion - Robotic Prostatectomy

AUA Moderator: **Professor Joseph A. Smith**, Vanderbilt University, Nashville, USA

AUA Panelists:

**Dr Matthew T. Gettman**, Mayo Clinic, Rochester, USA

**Dr Sanjay Razdan**, Professor and Chairman International Robotic Prostatectomy Institute, Miami, FL, USA

BAUS Panelists:

**Professor Prokar Dasgupta**, Guy's Hospital, London

**Professor Roger Kirby**, The Prostate Centre, London

0955-1010

## Case Discussion – Congenital anomalies of the genitourinary tract

Moderator:

**Mr Divyesh Desai**, Great Ormond Street Hospital, London

Panelists:

**Professor Peter Cuckow**, Great Ormond Street Hospital, London

**Dr Joe Borer**, Boston Children's Hospital, USA

1010-1015

## Questions & Answers

1015-1115

Hall 1A

## Updates and Breaking News

Chair: **Mr Simon Brewster**, Churchill Hospital, Oxford

### Prostate Cancer

**Mr Philip Cornford**, Royal Liverpool University Hospital

### Bladder Cancer

**Miss Jo Cresswell**, James Cook University Hospital, Middlesbrough

### Kidney Cancer

**Mr Ben Challacombe**, Guy's Hospital, London

### Andrology and the Urethra

**Mr Andrew Sinclair**, Stepping Hill Hospital, Stockport

### Endoluminal Endourology

**Mr Daron Smith**, University College Hospital, London

### Female Urology and BPH

**Miss Suzanne Biers**, Addenbrooke's Hospital, Cambridge

## Thursday 30 June

### 1115-1200 Refreshment Break, Exhibition and ePoster Viewing

1200-1300

Hall 1A

### BJU International Session: What's new in functional urology?

Chair: **Professor Prokar Dasgupta**, Editor-in-Chief, BJU International and Guy's Hospital, King's College London

#### Nerve Stimulation

**Professor Dr Karl-Dietrich Sievert**, University Hospital, Salzburg, Austria

#### Spinal regeneration and anti-Nogo A antibodies

**Dr Marc Schneider**, Brain Research Institute, University of Zürich, and Department of Health Sciences and Technology, Switzerland

#### A focus on underactive bladder

**Professor Christopher Chapple**, The Royal Hallamshire Hospital, Sheffield Teaching Hospitals

1200-1315

Room 4

### ePoster Session 10 – Prostate Cancer Treatment: Choices and Outcomes

Chairs: **Justine Royle** & **Joseph Smith**

For the ePoster abstracts please see page 52

1200-1300

Room 12

### ePoster Session 11 – Basic Science

Chairs: **Imran Ahmad** & **Ased Ali**

For the ePoster abstracts please see page 53

1300-1400

Hall 1A

### IBUS and BAUS Session

Chairs: **Mr V Srinivasan**, Glan Clwyd Hospital, Rhyl, Wales

**Mr Subu Subramonian**, Queen Elizabeth Hospital, Birmingham

#### Future Directions in minimally invasive surgery: Novel platforms and New Technologies

**Dr Matthew T. Gettman**, Mayo Clinic, Rochester, USA

#### Laparoscopic and Robotic Stag horn Stone Surgery

**Dr Marius C Conradie**, President South African Endourological Society

#### Novel techniques in Robotic Prostatectomy

**Dr Sanjay Razdan**, Professor and Chairman International Robotic Prostatectomy Institute, Miami, FL, USA






# OAB: It's personal!

Tuesday 28<sup>th</sup> June 2016 • 17.00 – 18.00 Hall 1A

What do our patients want from us and why do we fall short with our current approach to explaining and managing OAB?

How can the choice of treatment and the way we communicate with patients improve the outcome?

JOIN OUR ESTEEMED FACULTY AS WE TAKE A LOOK AT OAB FROM A DIFFERENT VIEWPOINT: *the patient's perspective*

-  Hear what patients feel they need to know about OAB and how our current explanations fall short
-  Understand the psychologist's perspective beyond patient motivation to want treatment
-  Learn how we can adapt our approach to explaining and managing OAB to improve patients' persistence with treatment

## Chairman

**Professor Paul Abrams**  
Professor of Urology, Bristol

**Mr Andrew Sinclair**  
Consultant Urologist, Stockport

**Professor Rob Horne**  
Professor of Behavioural Medicine, London

**Mr Roland Morley**  
Consultant Urologist, London

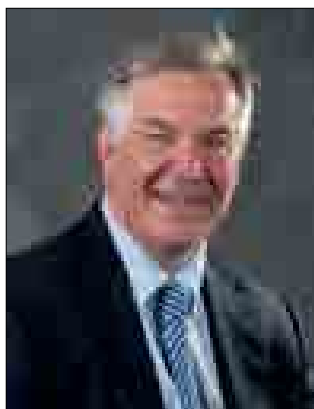
**Betmiga™ (mirabegron) Prescribing Information Presentation:** Betmiga™ prolonged-release film-coated tablets containing 25mg or 50mg mirabegron. **Indication:** Symptomatic treatment of urgency, increased micturition frequency and/or urgency incontinence as may occur in adult patients with overactive bladder (OAB) syndrome. **Dosage:** Adults (including the elderly): Recommended dose: 50mg once daily. Children and adolescents: Should not be used. **Contraindications:** Hypersensitivity to active substance or any of the excipients. Severe uncontrolled hypertension. **Warnings and Precautions:** Should not be used in patients with end stage renal disease (or patients requiring haemodialysis) or severe hepatic impairment. Not recommended in patients with severe renal impairment and/or moderate hepatic impairment concomitantly receiving strong CYP3A inhibitors. Dose adjustment to 25mg is recommended in patients with mild/moderate renal and/or mild hepatic impairment receiving strong CYP3A inhibitor concomitantly and in patients with severe renal and/or moderate hepatic impairment. Mirabegron can increase blood pressure. Blood pressure should be measured at baseline and periodically during treatment, especially in hypertensive patients. Caution in patients with a known history of QT prolongation or in patients taking medicines known to prolong the QT interval. Use with caution in patients with clinically significant bladder outlet obstruction (BOO) and in patients taking

antimuscarinics for OAB. Not recommended during pregnancy and in women of childbearing potential not using contraception. Not recommended during breastfeeding. **Interactions:** Clinically relevant drug interactions between Betmiga™ and medicinal products that inhibit, induce or are a substrate for one of the CYP isozymes or transporters are not expected, except for inhibitory effect on the metabolism of CYP2D6 substrates. Betmiga™ is a moderate and time-dependent inhibitor of CYP2D6 and weak inhibitor of CYP3A. No dose adjustment needed when administered with CYP2D6 inhibitors or CYP2D6 poor metabolisers. Caution if co-administered with medicines with a narrow therapeutic index and significantly metabolised by CYP2D6. When initiating in combination with digoxin, the lowest dose for digoxin should be prescribed and serum digoxin should be monitored and used for titration of digoxin dose. Substances that are inducers of CYP3A or P-gp decrease the plasma concentrations of Betmiga™. No dose adjustment is needed for Betmiga™ when administered with therapeutic doses for rifampicin or other CYP3A or P-gp inducers. The potential for inhibition of P-gp by Betmiga™ should be considered when combined with sensitive P-gp substrates. Increases in mirabegron exposure due to drug-drug interactions may be associated with increases in pulse rate. **Adverse Effects:** Urinary tract infection, tachycardia, nausea, constipation, diarrhoea, headache, dizziness, vaginal infection, cystitis, palpitation, atrial

fibrillation, dyspepsia, gastritis, urticaria, rash, rash macular, rash papular, pruritus, joint swelling, vulvovaginal pruritus, blood pressure increase, liver enzymes increase, eyelid oedema, lip oedema, leukocytoclastic vasculitis, purpura, angioedema, urinary retention, hypertensive crisis and insomnia. Prescribers should consult the Summary of Product Characteristics in relation to other side effects. **Pack and prices:** Betmiga™ 25mg and Betmiga™ 50mg pack of 30 tablets £29.00. **Legal Category:** POM. **Product Licence Numbers:** EU/1/12/809/001 – 018. **Date of Preparation:** April 2016. **Further information available from:** Astellas Pharma Ltd, 2000 Hillwood Drive, Chertsey, Surrey, KT16 0RS, UK. Betmiga™ is a Registered Trademark. For full prescribing information please refer to the Summary of Product Characteristics. **For Medical Information phone 0800 783 5018.**

**Adverse events should be reported. Reporting forms and information can be found at [www.mhra.gov.uk/yellowcard](http://www.mhra.gov.uk/yellowcard) Adverse events should also be reported to Astellas Pharma Ltd. Please contact 0800 783 5018**

## Medal Winners Biographies



### Gold Medal

#### Mr Tim Terry

Tim Terry trained at King's College, London and St George's Hospital Medical School. He held registrar rotations in Southampton and London and was the recipient of a Wellcome Foundation Research Fellowship at St George's Hospital SW17. He

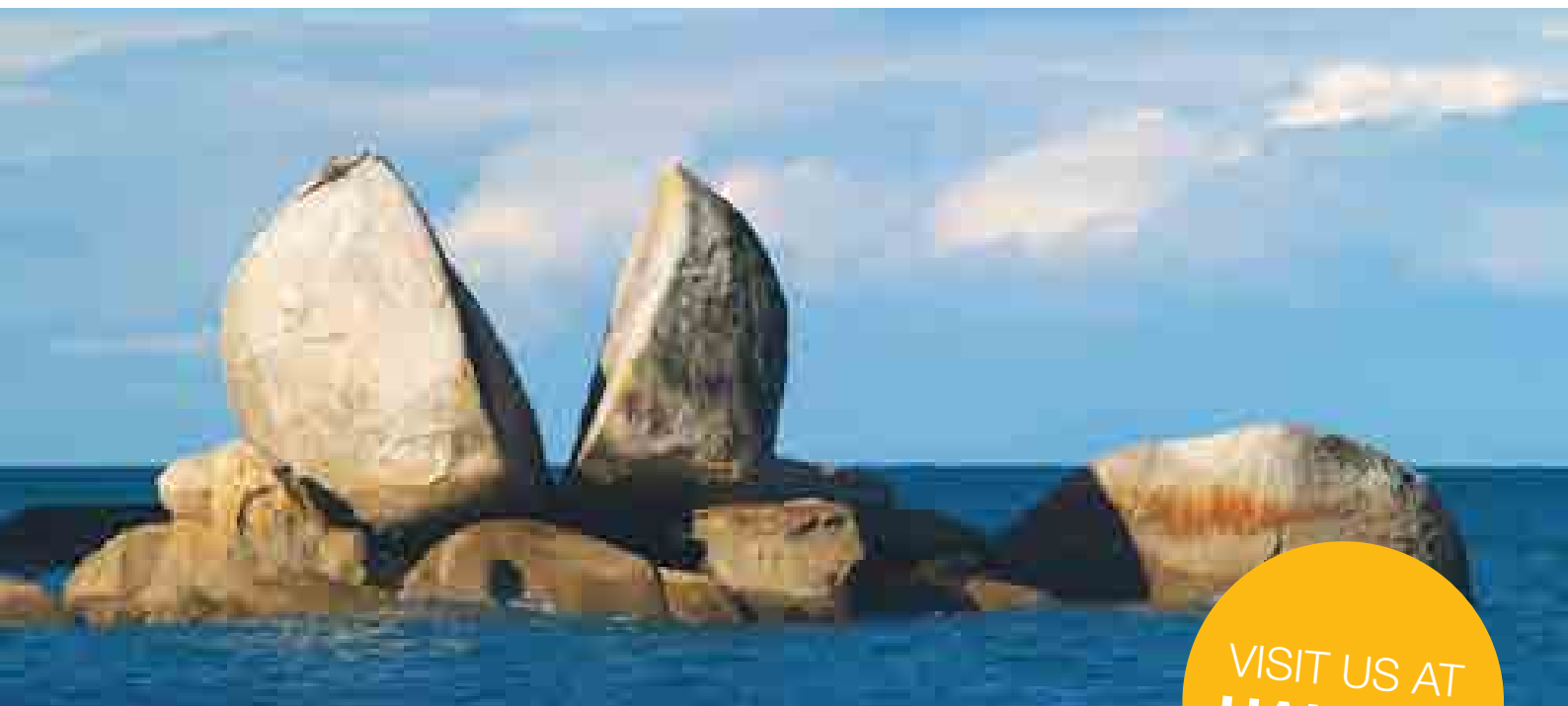
won the Hallett and Patey Prizes. Tim was a Senior Registrar at Leeds University Hospitals and was appointed as a Consultant Urological Surgeon to University Hospitals Leicester (UHL) in 1990. He is a Reader in Health Sciences at Leicester University and a Visiting Professor at the Van Gueest CRC, Nottingham Trent University

Tim's clinical interests have always been in the generality of surgery and urology but he developed interests in functional, reconstructive and prosthetic urology during his consultant career. Through links with Professors David Crawford and Martin Koyle at the University of Colorado Life Sciences Centre in Denver he imported into UHL reconstructive surgery in the management of children with neuropathic bladder, radical prostatectomy and orthotopic bladder replacement. Tim also developed a centre for managing transsexuals in the Midlands performing over 350 vaginal genitoplasties. He worked collaboratively with Professor Steve Wilson from Arkansas to promote penile prosthetic surgery and the use of the artificial urinary sphincter in the UK. In collaboration with the urogynaecologists at UHL he provided a surgical service for urethral diverticula, urinary fistula, salvage incontinence and tape complications.

Tim has consistently promoted the development of urology through BAUS as Council Member, Trustee, IRM Lead for Urology, CPD Lead, Secretary and Chair of BAUS Andrology Section, Council Member of BAUS Section FNUU and Secretary of BAUS.

His educational contributions include Chairman Trent Urology Group and East Midlands Urology Association, Deanery Lead for Surgery, LNR Deanery, Associate Postgraduate Dean, East Midlands LETB, SAC Chair Urology, Examiner FRCS Urology. At the RCS England he has been an examiner for the MRCS for 19 years and is currently a Council Member. He received a PG Dip Med ED from Dundee University in 2011. SURG awarded him the Silver Cystoscope in 2014. As a trainer he ran a bespoke Female Urology Fellowship at UHL for 14 trainees. He remains an active and enthusiastic Egan trained Mentor offering sessions at BAUS and AAGBI AGM's and to postgraduate trainees in the East Midlands.

Academically he has published over 80 papers and given over 200 presentations at regional, national and international meetings. He was a Visiting Professor at University Colorado Life Sciences Centre, Denver, USA and Kuwait University. He has been a Visiting Surgeon to 33 UK Hospitals.



VISIT US AT  
**HALL 1A**

## THE STONE DEBATE: ALL YOU NEED TO KNOW & MORE

**Sponsored Symposium at BAUS, Wednesday 29 June 2016, 16:30-17:30**

Stone treatment in the UK is evolving, techniques and methods are continuously developing. With this in mind, are you aware of the latest advancements? From scopes to shockwaves, all will be revealed.

### **Welcome from the Chairman**

Mr Ken Anson, Consultant Urologist, St George's Hospital

### **Battle of the Scopes: Fibre vs. Video, Disposable vs. Reusable**

Mr Oliver Wiseman, Consultant Urologist, Addenbrookes Hospital

### **Stone Consumables: The complete line up**

Mr Ben Grey, Consultant Urologist, Central Manchester Foundation Trust

### **Intracorporeal Lithotripsy: To Fragment or To Dust?**

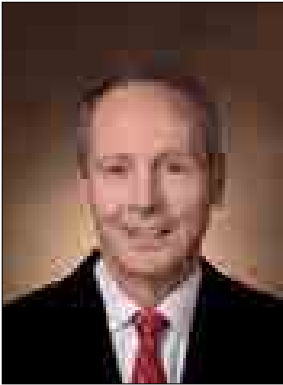
Mr Matthew Bultitude, Consultant Urologist, Guy's and St. Thomas' NHS Foundation Trust

### **Q&A & Closing Comments**

Mr Ken Anson, Consultant Urologist, St George's Hospital

Find out more from the experts and **join the debate**. We look forward to seeing you.

## Medal Winners Biographies continued



### St Paul's Medal

#### Joseph A. Smith, Jr., M.D.

Joseph A Smith, Jr. is William L. Bray Professor in the Department of Urologic Surgery at Vanderbilt University in Nashville, Tennessee. He served as Chairman of the department from 1991 to 2015. He is an AOA graduate of the University of Tennessee

Medical School and was chosen the Outstanding Graduate. He performed his surgery residency at the University of Texas Southwestern Medical School at Dallas, his urology residency at the University of Utah, and a fellowship in urologic oncology at Memorial Sloan-Kettering Cancer Center in New York.

Dr. Smith has served as President of the American Board of Urology, President of the Society of Urologic Oncology, President of the Southeastern Section of the American Urologic Association, and Chairman of the Residency Review Committee for Urology. He is a recipient of the Distinguished Contribution Award and the Hugh Hampton Young Award from the American Urologic Association and the SUO achievement medal and the Huggins Medal from the Society of Urologic Oncology. He is a member of the American Association of Genitourinary Surgeons and the Clinical Society of GU Surgeons. He was awarded the Outstanding Alumnus Award from the University of Tennessee. Dr. Smith is Editor of the Journal of Urology, the most widely read and highly cited journal in the specialty. He has been listed on Castle Connolly prestigious "Best Doctors" list for 25 consecutive years and was designated by Time Magazine as one of the top five surgeons in the country for treatment of cancer.

He has published over 300 peer reviewed manuscripts, over 100 book chapters, and has edited or co-edited eight textbooks including the third edition of Hinman's Atlas of Urologic Surgery. His professional focus has been on innovative treatment strategies for patients with urologic cancers and introduction and evaluation of technologic advances in urologic surgery. He has performed over 1,000 radical cystectomies and 7,000 radical prostatectomies.



## Medal Winners Biographies continued



### St Peter's Medal

#### Professor Margaret (Maggie) Knowles

Following education at Aylesbury High School, I studied Microbiology at the University of Bristol. The course shared modules with the degree in Cellular Pathology and it was there that my interest in cancer was born. I graduated in

1973, winning the Anna Mayr Harting prize for Bacteriology. My PhD studies were at the Imperial Cancer Research Fund Laboratories in London (now Cancer Research UK London Research Institute) where under the mentorship of Dr Sammy Franks I was encouraged to focus on epithelial cells as model systems for cancer research. A major challenge at the time was to maintain normal epithelial cells in tissue culture, a prerequisite for studies related to the development of most human cancers. I showed that mixed epithelial-mesenchymal cell cultures of mouse submandibular gland could be maintained for prolonged periods in culture and that following treatment with carcinogens, slow growing "foci" of epithelial cells with extended lifespan were induced and these ultimately gave rise to cell lines that formed tumours in mice. This was the first demonstration of epithelial cell transformation in culture. This idea that "stages" could be defined during this process together with data from epidemiological studies of human cancers which provided evidence for multiple rate-limiting steps during the formation of human cancers, led to my long-term focus on the molecular events that underlie the step-wise changes on the path to malignancy. From 1977 to 1983 I undertook postdoctoral studies at the Middlesex Hospital Medical School with Roger Berry and Marian Hicks. This work defined conditions for long-term culture of organised fragments of human urothelium.

I established my own group at the Marie Curie Research Institute in Oxted Surrey in 1983. Here I learned molecular techniques to complement my cell biology expertise. These powerful new tools allowed us to focus directly on human bladder cancer tissues. With help from Euan Milroy and colleagues at the Middlesex Hospital, routine collection of bladder tumour tissues and matched blood samples was initiated. Later, following the appointment of a Postdoctoral Fellow from Birmingham, and support from Mike Wallace, tissues were also collected from Hospitals in the West Midlands. Ongoing support from clinical colleagues has been invaluable in this, and we now host one of the largest bladder cancer tissue banks in the world.

In 1997 I moved to the University of Leeds as Deputy Director of the Imperial Cancer Research Fund Unit (Later a Cancer Research UK Centre) based at St James's University Hospital. Currently, I am a Deputy Director of The Leeds Institute of Cancer and Pathology and Head of the Section of Molecular

Oncology. Peter Selby, Director of the Leeds Unit encouraged me to work closely with oncologists and urologists to ensure that our work addresses relevant clinical problems and this has been extremely rewarding. I have hosted Clinician Scientists and their groups in my laboratory, have supervised Clinical Fellows in Urology and Oncology and have excellent relationships with colleagues in the Department of Urology. Since 1999, with Tim Bishop, I have overseen a mutation analysis service in Leeds, initially as part of the ICRF/CRUK Research Services for all grantees and more recently for Leeds researchers as part of the CRUK Leeds Centre.

I have been a member of the NCRI Bladder Cancer Clinical Studies Group (Advanced Disease Subgroup) since 2006. I am co-Investigator on three clinical trials related to work carried out by my group (TOTEM, FIESTA and CALIBER), I have obtained funding for sample collection in the CALIBER trial and am one of the Domain Leads in Simon Crabb's successful application for a bladder cancer Genomics England Clinical Interpretation Partnership (GeCIP). In 2008 I was elected to the Board of the European Society of Urological Research and since 2011 have been Vice Chair. It has been a great pleasure to work with other Board members with interests in bladder, renal and prostate cancer to bring good clinical, scientific and tissue-specific balance to the EAU sessions and ESUR meetings that we organise. I also serve on the Scientific Advisory Panels of The Covent Garden Cancer Research Trust and Orchid Cancer Appeal in the UK and on the External Advisory Boards for the US Bladder Cancer SPORE and the Johns Hopkins Greenberg Bladder Cancer Institute.

I have edited a textbook on Molecular Biology of Cancer and published 157 papers in peer-reviewed journals, 26 reviews and 17 book chapters. The majority of my work in Leeds has been funded by programme grants from CRUK (1997-2013) and Yorkshire Cancer Research (2014-present). My driving hypothesis is that full molecular understanding will have important clinical applications. Our work has included tissue culture of normal and tumour-derived urothelial cells and genetic manipulation of these for functional studies of genes implicated in tumour development. We have carried out extensive genomic discovery work on bladder cancer samples and have identified common genomic alterations. A major aim is to identify novel targets for therapy and it is exciting that the work of my lab and others on FGFR3 stimulated investment in the development of small molecules and antibodies to target this activated receptor and that clinical trials of these agents in advanced bladder cancer are now underway. Our current work focuses on non-muscle invasive bladder cancer. This includes whole exome sequencing and other genome-wide analyses to provide molecular sub-classification and identification of prognostic signatures, particularly for stage T1 disease. My goal has been to contribute knowledge that will be clinically useful. Thus, it is an enormous honour for my work to be recognised by the award of the BAUS St Peter's Medal.

# Best Academic Paper Session

## Monday 27 June

0900-1000 Room 3B

There will be 10 minutes for each presentation:

6 minutes for presentation

4 minutes for Q&A / turnaround

- 1 Results of the British Association of Urological Surgeons Female Stress Urinary Incontinence Procedures Outcomes Audit**  
S Cashman, N Thiruchelvam, R Morley
- 2 Randomised controlled trial of ultra mini percutaneous nephrolithotomy versus retrograde intrarenal surgery in the treatment of 10-30mm calculi**  
S N Datta, K-W Ng, R Solanki, Janak Desai
- 3 A Urinary Peptide Biomarker Panel to Identify Significant Prostate Cancer**  
MJS Salji, A Latosinska, A McKay, J Clark, H Mischak, HY Leung
- 4 The significance of close surgical margins in organ sparing surgery for penile squamous cell cancer**  
D Sri, A Sujenthiran, W Lam, C Corbishley, BE Ayres, N Watkin
- 5 Significance of negative margin in nephron sparing nephrectomy and its implications on disease free survival**  
A Shafik, A Koderia, T King, N Hicks, R Chen, A Maker
- 6 Open radical cystectomy in the UK – the current standard of care? Analysis of the BAUS cystectomy audit**  
ER Jefferies, J Cresswell, JS McGrath, C Miller, L Hounsborne, S Fowler, EW Rowe

# mCRPC: THE FAST AND FURIOUS EVOLUTION

(This meeting is for healthcare professionals only)

**Date:** Monday 27th June 2016

**Time:** 17:00-18:00

**Venue:** Hall 1A, The BT Convention Centre Liverpool

A buffet will be provided from 16:30

## Agenda

Session	Speakers
Welcome and introduction	Dr Vijay Sangar, Consultant Urological Surgeon, The Christie NHS Foundation Trust
Optimising the value of earlier treatment in mCRPC	Dr Antonio Alcaraz Asensio, Consultant Urological Surgeon, Hospital Clinic of Barcelona
Health-related QoL and treatment satisfaction among patients receiving novel anti-androgen therapies for the treatment of mCRPC	Dr Sarah Pascoe, Consultant Clinical Oncologist, Derriford Hospital Plymouth
Debate - the future pathway in prostate cancer	Dr Vijay Sangar, Dr Sarah Pascoe, Dr Antonio Alcaraz Asensio

**ZYTIGA® 250 mg Tablets PRESCRIBING INFORMATION. ACTIVE INGREDIENT(S):** Abiraterone acetate. Please refer to Summary of Product Characteristics (SmPC) before prescribing. **INDICATION(S):** Taken with prednisone or prednisolone for the treatment of metastatic castration resistant prostate cancer in adult men who are asymptomatic or mildly symptomatic after failure of androgen deprivation therapy in whom chemotherapy is not yet clinically indicated. The treatment of metastatic castration resistant prostate cancer in adult men whose disease has progressed on or after a docetaxel-based chemotherapy regimen. **DOSAGE & ADMINISTRATION: Adults:** 1000 mg (4 tablets) single daily dose. **Not with food** as this increases the systemic exposure (take dose at least two hours after eating; no food for at least one hour post-dose). Swallow whole with water. Take with recommended dose of prednisone or prednisolone of 10 mg daily. Medical castration with LHRH analogue should be continued during treatment in patients not surgically castrated. **Children:** No relevant use. **Hypokalaemia:** In patients with pre-existing, or who develop hypokalaemia during treatment with Zytiga, consider maintaining potassium level at  $\geq 4.0$  mM. Patients who develop Grade  $\geq 3$  toxicities (hypertension, hypokalaemia, oedema and other non-mineralocorticoid toxicities) stop treatment and start appropriate medical management. Do not restart Zytiga until symptoms of the toxicity have resolved to Grade 1 or baseline. **Renal impairment:** No dose adjustment, however no experience in patients with prostate cancer and severe renal impairment; caution advised. **Hepatotoxicity:** If hepatotoxicity develops (ALT or AST  $\geq 5$ x upper limit of normal - ULN), stop treatment immediately until liver function returns to baseline; restart Zytiga at 500 mg (2 tablets) once daily and monitor serum transaminases at least every 2 weeks for 3 months and monthly thereafter (see Special warnings & precautions). If hepatotoxicity recurs on reduced dose, stop treatment. If severe hepatotoxicity develops (ALT or AST  $20$ xULN), discontinue Zytiga and do not restart. **Hepatic impairment:** Mild (Child-Pugh class A) - no dose adjustment required. Moderate (Child-Pugh class B) - approximately 4x increased systemic exposure after single oral doses of 1,000 mg. Moderate/Severe (Child-Pugh class B or C) - no clinical data for multiple doses. Use with caution in moderate impairment, benefit should clearly outweigh risk. **CONTRAINDICATIONS:** Pregnancy or potential to be pregnant. Hypersensitivity to active substance or any excipients. Severe hepatic impairment (Child-Pugh Class C). **SPECIAL WARNINGS & PRECAUTIONS:** Zytiga may cause hypertension, hypokalaemia and fluid retention due to increased mineralocorticoid levels. **Cardiovascular:** Caution in patients with history of cardiovascular disease. In patients with a significant risk for congestive heart failure (history of cardiac failure, uncontrolled hypertension, ischaemic heart disease) consider an assessment of cardiac function before treating (echocardiogram). Safety not established in patients with left ventricular ejection fraction  $< 50\%$  or NYHA Class II to IV (pre-chemotherapy) and III or IV (post-chemotherapy) heart failure. Before treatment cardiac failure should be treated and cardiac function optimised. Correct and control Hypertension, hypokalaemia and fluid retention pre-treatment. Caution in patients whose medical conditions might be compromised by hypertension, hypokalaemia or fluid retention e.g. heart failure, severe or unstable angina pectoris, recent myocardial infarction or ventricular arrhythmia, severe renal impairment. Monitor blood pressure, serum potassium and fluid retention and other signs and symptoms of congestive heart failure before treatment, then every two weeks for 3 months, and monthly thereafter. QT prolongation observed in patients experiencing hypokalaemia with Zytiga treatment. Consider discontinuation if there is a clinically significant decrease in cardiac function. **Hepatotoxicity & hepatic impairment:** Measure serum transaminases pre-treatment and every two weeks for first three months, then monthly. If symptoms/signs suggest hepatotoxicity, immediately measure serum transaminases. If ALT or AST  $> 5$ x ULN, stop treatment and monitor liver function. Restart treatment after liver function returns to baseline; use reduced dose (see dosage and administration). No clinical data in patients with active or symptomatic viral hepatitis. Rare reports of acute liver failure and hepatitis fulminant, some fatal. **Corticosteroid withdrawal:** Monitor for adrenocortical insufficiency if prednisone or prednisolone is withdrawn. Monitor for mineralocorticoid excess if Zytiga continued after corticosteroids withdrawn. **Bone density:** Decreased bone density may be accentuated by Zytiga plus glucocorticoid. **Prior use of ketoconazole:** Lower response rates may occur in patients previously treated with ketoconazole for prostate cancer. **Hyperglycaemia:** Use of glucocorticoids

could increase hyperglycaemia, measure blood sugar frequently in patients with diabetes. **Use with chemotherapy:** Safety and efficacy of concomitant use of Zytiga with cytotoxic chemotherapy not established. **Intolerance to excipients:** Not to be taken by patients with galactose intolerance, Lapp lactase deficiency or glucose-galactose malabsorption. Take sodium content into account for those on controlled sodium diet. **Potential risks:** Anaemia and sexual dysfunction may occur in men with metastatic castration resistant prostate cancer including those taking Zytiga. **Skeletal muscle effects:** Cases of myopathy reported. Some patients had rhabdomyolysis with renal failure. Caution is recommended in patients concomitantly treated with drugs known to be associated with myopathy/rhabdomyolysis. **SIDE EFFECTS: Very common:** urinary tract infection, hypokalaemia, hypertension, diarrhoea, peripheral oedema. **Common:** sepsis, hypertriglyceridaemia, cardiac failure (including congestive heart failure, left ventricular dysfunction and decreased ejection fraction), angina pectoris, arrhythmia, atrial fibrillation, tachycardia, dyspepsia, increased alanine aminotransferase, increased aspartate aminotransferase, rash, haematuria, fractures (includes all fractures with the exception of pathological fracture). **Other side effects:** adrenal insufficiency, myocardial infarction, QT prolongation, hepatitis fulminant, acute hepatic failure, myopathy, rhabdomyolysis. **Refer to SmPC for other side effects. FERTILITY/PREGNANCY/LACTATION:** Not for use in women. Not known whether abiraterone or its metabolites are present in semen. A condom is required if the patient is engaged in sexual activity with a pregnant woman. If the patient is engaged in sexual activity with a woman of childbearing potential, a condom is required along with another effective contraceptive method. Studies have shown that abiraterone affected fertility in male and female rats, but these effects were fully reversible. **INTERACTIONS:** Caution with drugs activated by or metabolised by CYP2D6 particularly when there is a narrow therapeutic index e.g. metoprolol, propranolol, desipramine, venlafaxine, haloperidol, risperidone, propafenone, flecainide, codeine, oxycodone and tramadol. Avoid strong inducers of CYP3A4 (e.g. phenytoin, carbamazepine, rifampicin, rifabutin, rifapentine, phenobarbital, St John's wort). Zytiga is a CYP2C8 inhibitor (in vitro data). Examples of medicinal products metabolised by CYP2C8 incl paclitaxel, repaglinide. No clinical data are available on the use of Zytiga with CYP2C8 substrates. May increase concentrations of drugs eliminated by OATP1B1. Food (see Dosage & Administration). Caution with medicines known to prolong QT interval or induce Torsade de pointes e.g. quinidine, disopyramide, amiodarone, sotalol, dofetilide, ibutilide, antiarrhythmic medicinal products, methadone, moxifloxacin and antipsychotics. Use of Zytiga with spironolactone is not recommended. **Refer to SmPC for full details of interactions. LEGAL CATEGORY:** POM. **PRESENTATIONS, PACK SIZES, MARKETING AUTHORISATION NUMBERS & BASIC NHS COSTS**

PRESENTATIONS	PACK SIZES	MARKETING AUTHORISATION NUMBER(S)	BASIC NHS COSTS
Bottle	120 tablets	EU/1/11/714/001	£2930

**MARKETING AUTHORISATION HOLDER:** JANSSEN-CILAG INTERNATIONAL NV, Turnhoutseweg 30, B-2340 Beerse, Belgium. **FURTHER INFORMATION IS AVAILABLE FROM:** Janssen-Cilag Limited, 50-100 Holmers Farm Way, High Wycombe, Buckinghamshire, HP12 4EG, UK.

Prescribing information last revised: May 2016

Adverse events should be reported. Reporting forms and information can be found at [www.mhra.gov.uk/yellowcard](http://www.mhra.gov.uk/yellowcard). Adverse events should also be reported to Janssen-Cilag Limited on 01494 567447 or at [dsafety@its.jnj.com](mailto:dsafety@its.jnj.com).

© Janssen-Cilag Limited 2016

Date of preparation: June 2016. PHGB/ZYT/0416/0019a

# ePoster Sessions

There will be 5 minutes for each ePoster presentation:  
3 minutes for presentation  
2 minutes for Q&A / turnaround

## ePoster Session 1 Endourology

Tuesday 28 June • 1045-1215 • Room 4

- P1-1 Recurrence of Kidney Stones: A UK Cohort study**  
J Tanner, K Subramonian
- P1-2 Urolithiasis represents a significant and growing burden for the NHS: a contemporary assessment of urinary stone related clinical activity within the NHS in England**  
SJ Srirangam, P Cleaveland, L Olson
- P1-3 Audit of Emergency Re-attendance Post-Ureteroscopy at a District general Hospital**  
CE Lovegrove, N Shrotri
- P1-4 Predictors for spontaneous stone passage at acute presentation**  
HK Sra, C Cumby, T Bracewell, R Kucheria, A Goyal
- P1-5 Do stones still kill? An analysis of death from stone disease 1999 to 2013 in England and Wales**  
FEC Kum, W Mahmalji, J Hale, K Thomas, M Bultitude, J Glass
- P1-6 PCNL access by Urologist or Radiologist: An analysis of the BAUS PCNL Registry**  
JN Armitage, S Fowler, WJ Finch, NA Burgess, SO Irving, J Withington, J Glass, OJ Wiseman
- P1-7 Assessing the Volume-Outcome Relationship for PCNL in 2014- Analysis using BAUS Registry Data of over 2000 cases**  
JM Withington, WJG Finch, S Fowler, JN Armitage, JM Glass, SO Irving, NA Burgess, K Thomas, OJ Wiseman
- P1-8 5000 cases from the BAUS PCNL Registry – a changing population and practices?**  
WJG Finch, L Derbyshire, RC Calvert, S Fowler, JN Armitage, J Glass, J Withington, OJ Wiseman, SO Irving, NA Burgess
- P1-9 Do patients with urinary diversions have worse peri-operative outcomes after percutaneous nephrolithotomy?**  
M Bolgeri, G Mazzon, V Arumuham, R Dale, C Allen, S Allen, D Smith, S Choong
- P1-10 Randomised controlled trial of ultra mini percutaneous nephrolithotomy versus retrograde intrarenal surgery in the treatment of 10-30mm calculi**  
SN Datta, K-W Ng, R Solanki, Janak Desai

- P1-11 Normocalcemic Hyperparathyroidism - an unexplored factor in recurrent stone disease?**  
HE Smith, RA Chapman, SG Kata
- P1-12 Prevalence of hypertension and renal impairment in patients with cystinuria**  
FEC Kum, K Wong, D Game, J Glass, M Bultitude, K Thomas
- P1-13 Ureteric extra-anatomic stents: Long term experience and the suitability in palliative cases with a short term prognosis.**  
CJ Johnstone, A Gkentzis, P Hughes, M Kimuli, J Cartledge, S Biyani, G Mori, M Kimuli
- P1-14 Effects of Silicone Hydrocoated Double Loop Ureteral Stent on Symptoms and Quality of Life in Patients Undergoing FURS for Kidney Stone: A Comparative Randomized Multicentre Clinical Study Intermediate Results**  
EWY Lee, OB Pullar, M Daudon, F Kleinclaus, G Guichard, J Letendre, P Holliday, I Desriac, O Traxer, OJ Wiseman
- P1-15 Should we save them? Analysis of the management of relatively poorly functioning (<25%) obstructed kidneys.**  
CJ Johnstone, A Gkentzis, S Biyani, M Kimuli, J Cartledge, C Patel, S Biyani

## ePoster Session 2 Bladder Cancer Management: Shifting Sands

Tuesday 28 June • 1045-1215 • Room 12

- P2-1 Evaluation of the new NICE Two Week Wait Referral Guidelines for Non-Visible Haematuria**  
SS Rai, AM Davies, R Morrison, P Singh, J Gill
- P2-2 Rejecting referrals for asymptomatic non-visible haematuria: implications of a change in practice**  
AC Cox, M Kamarizan, M Hunter, JRM Wilson, DJ Painter, AC Carter
- P2-3 How safe is it to discharge low-risk non-muscle invasive bladder cancer at 12 months?**  
DR Thurtle, HJ Cho, EM Gordon, M Johnson, G Wilson
- P2-4 Shortages of Intravesical bacillus Calmette-Guérin (BCG): Are patients being harmed?**  
KR MacKenzie, L Mudd, J Cresswell

## ePosters

- P2-5** **Hyperthermic intra-vesical chemotherapy (HIVEC) neoadjuvant and adjuvant treatment of intermediate or high risk non-muscle invasive bladder cancer**  
ASE Sousa, I Piñeiro, S Rodriguez, J Flores-Carajal, C Uribarri
- P2-6** **Survival of patients undergoing Early Radical Cystectomy (ERC) versus Cystectomy following Intra-vesical BCG Immunotherapy (RC) for T1G3 bladder cancer.**  
PL Caygill, M Hadjipavlou, D Wilby
- P2-7** **Is cardiopulmonary exercise testing in patients undergoing radical cystectomy a useful preoperative tool?**  
R Khan, O Elhage, C Amadi, F Ismail, C Gan, K Thomas, T O'Brien, R Thurairaja, P Dasgupta, MS Khan
- P2-8** **Can pre-operative gait velocity (GV) replace cardiopulmonary exercise testing (CPET) as an independent predictor of survival and complications following radical cystectomy (RC)?**  
C Down, R Nair, T Fynmore, K Omar, S Itam, MS Khan, R Thurairaja
- P2-9** **'Prehabilitation' of patients undergoing radical cystectomy to assist recovery: results of a feasibility study**  
S Banerjee, K Manley, B Shaw, J Saxton, M Rochester, R Mills
- P2-10** **Patients with low cardiorespiratory fitness benefit from robotic cystectomy with intracorporeal diversion for : a prospective cohort study**  
BW Lamb, WS Tan, A Sridhar, I Ahmad, P Eneje, S Nathan, J Hines, TP Briggs, R Stephens, JD Kelly
- P2-11** **Complications following Robotic Assisted Radical Cystectomy (RARC) with Intracorporeal Urinary Diversion: An Analysis of 90 Day Outcomes Stratified According to Type of Urinary Diversion**  
WS Tan, BW Lamb, MY Tan, I Ahmad, A Sridhar, S Nathan, J Hines, G Shaw, TP Briggs, JD Kelly
- P2-12** **The Role of Lymphadenectomy in Radical Cystectomy**  
KAS Sharif, OE El-Hage, FI Ismail, CG Gan, KA Ahmed, RT Thurairaja, PD Dasgupta, SK Khan
- P2-13** **Open radical cystectomy in the UK – the current standard of care? Analysis of the BAUS cystectomy audit**  
ER Jefferies, J Cresswell, JS McGrath, C Miller, L Hounsome, S Fowler, EW Rowe

- P2-14** **The BAUS radical cystectomy audit -an update on current practice (2014), and an analysis of differences in practice between centres and surgeons performing differing volumes of surgery**  
C Miller, J Cresswell, E Rowe, E Jefferies, L Hounsome, S Fowler, JS McGrath
- P2-15** **Oncological and non-oncological outcomes following open cystectomy with Enhanced Recovery After Surgery (ERAS): results from a 10-year contemporary high-volume, prospectively maintained UK series.**  
HM Simpson, K Mistry, SK Stewart, LA McAughtrie, LB Loureiro, ALJ Carroll, S Middleton, JJC Morton, P Mariappan

### ePoster Session 3

## Prostate Cancer Diagnosis: An Evolving Journey

Tuesday 28 June • 1400-1530 • Room 4

- P3-1** **Has perception of abnormal PSA values amongst GPs changed over the last 10 years?**  
EM Gordon, D Thurtle, R Brierly, J McLoughlin
- P3-2** **Comparison of age specific PSA cutoffs in a UK cohort with prostate cancer: Are BAUS Guidelines the best?**  
LJ Tay, LJE Spurling, JEW Hines, JSA Green
- P3-3** **Improving multivariable prostate cancer risk assessment.**  
R.W. Foley, RM Maweni, K Murphy, G Durkan, R Power, F O'Brien, K O'Malley, D Galvin, TB Murphy, RW Watson
- P3-4** **Transperineal Targeted Biopsy - Results from a Local Anaesthetic Service**  
EJ Bass, IA Donaldson, A Freeman, C Jameson, N Ramachandran, S Punwani, M Emberton, M Arya, HU Ahmed
- P3-5** **Early experience and Patient Reported Outcomes using a novel device (CAMPROBE) to undertake local anaesthetic out-patient transperineal prostate biopsies.**  
VJ Gnanapragasam, S Stearn, L Starling, C Kastner, A Doble, T Stone
- P3-6** **An Audit to Assess the Role of Pre-Biopsy Rectal Swab Culture and Targeted Antibiotic Prophylaxis on the incidence of Urosepsis Post Transrectal Ultrasound-guided (TRUS-guided) Biopsy of the Prostate.**  
P Rouse, S Saad, M Abdalnabi, A Deb, I Bourghi, P Verma, S Rai, S Kommu, J Urry, I Rudd



## ePosters

**P3-7 Is a routine bone scan staging really necessary for staging in intermediate risk (PSA 10-20), Gleason score 7 prostate cancer?**

SJ Srirangam, GD Wemyss-Holden

**P3-8 Prostate Imaging Compared to Transperineal Ultrasound-guided biopsy for significant prostate cancer Risk Evaluation (PICTURE): a prospective cohort validating study assessing multi-parametric MRI**

LA Simmons, A Kanthabalan, J Gelister, T Briggs, A Freeman, SC Charman, C Jameson, CM Moore, M Emberton, HU Ahmed, J Neves

**P3-9 MRI based surgical planning is accurate at excluding extra-capsular disease extension prior to robotic prostatectomy: a prospective cohort study of 683 cases**

AN Sridhar, BW Lamb, N Ramachandran, M Dawari, K Zaccai, I Ahmad, G Shaw, TP Briggs, S Nathan, JD Kelly

**P3-10 Transperineal MRI visually-targeted prostate biopsies compared to template mapping biopsy in 534 men requiring further risk stratification**

ADR Grey, TR Hartington, V Kasivisvanathan, M Arya, M Emberton, A Freeman, CM Moore, S Punwani, N Ramachandran, HU Ahmed

**P3-11 Understaging of prostate cancer on multi-parametric MRI - single institution prospective experience**

AA Deshpande, A Mevcha, N Hedley, V Sherwood, D MacDonald, K Jefferson

**P3-12 Targeted only biopsies of the prostate based on mpMRI: performance and accuracy of the transperineal route under conscious sedation.**

CG Orczyk, H Sidhu, P Punwani, A Freeman, C Moore, M Arya, M Emberton, HU Ahmed

**P3-13 What are the radiological, surgical and patient factors influencing detection of cancer by MRI-targeted prostate biopsy?**

V Kasivisvanathan, S Renshaw, A Grey, H Mair, O Nehikhare, E van der Saar, R Warner, M Emberton, H Ahmed, C Moore

**P3-14 Multiparametric MRI and Targeted Biopsy: Use in Active Surveillance Protocols**

D Eldred-Evans, K Wong, A Polson, G Rottenberg, B Challacombe, S Van Riji, R Popert

**P3-15 Combining mpMRI sequences for the diagnosis of prostate cancer – the value of adding diffusion and contrast enhancement to T2: outcomes from the PICTURE trial**

JB Neves, L Simmons, A Kanthabalan, A Freeman, S Punwani, Emberton, C Moore, M Arya, S Charman, HU Ahmed

## ePoster Session 4

## Education and Managing Urological Practice

Tuesday 28 June · 1430-1545 · Room 12

**P4-1 Initial experience of an algorithm-based protocol for the community follow-up of men with stable prostate cancer**

PP Goodall, J Little, E Robinson, I Trimble, OJ Cole, TJ Walton

**P4-2 Who manages metastatic prostate cancer? Results from the National Prostate Cancer Audit**

MG Parry, A Sujenthiran, A Aggarwal, P Cathcart, S Charman, J Nossiter, H Payne, J van der Meulen, N Clarke

**P4-3 Can we delegate TRUS biopsies to nurse urologists or middle grades and how much training do they require?**

JFD Donaldson, WG Gietzmann, ML Lardas, KW Wardlaw, AR Rawlinson, JS Royle

**P4-4 Do specialist renal MDT meetings provide good value?**

JB Neves, S Shepherd, J Morales, D Cullen, M Aitchison, M Tran

**P4-5 Trends and outcomes in a ward-based urology assessment unit – implications for ambulatory care provision**

RD Sandler, SK Conroy, S Miah, S Venugopal, DJ Rosario

**P4-6 An audit of outpatient procedure income**

S Muktar, C Brown, C Martyn-Hemphill

**P4-7 A Mathematical Approach to Theatre List Planning Reduces Wasted Time and has the Potential to Reduce Cost**

JE Dyer, T Brophy, M Nagarajan, J Husain, A Thompson, EA Green

**P4-8 Post-operative Blood Tests in Patients Undergoing Urological Surgery**

P Ravindra, G Lam, MAW Miller

**P4-9 Safer handover at weekends: making it stick**

CK Gunner, N Mayall, E Bryan, R Inman

## ePosters

**P4-10 Is there Increased Mortality in Urology Patients Admitted to Hospital at the Weekend?**

R Hilbert, A Pai, S Bott

**P4-11 Which is Better? Live Surgical Broadcasts vs Better than Live Surgery**

YC Phan, O Wiseman, P James, R Clayman, A Smith, A Rane

**P4-12 Impact of Urology Simulation Boot Camp in improving the endoscopic instrument knowledge**

S Rajpal, VS Hanchanale, S Jain, K Rogawski, J Taylor, R Gowda, I Eardley, T Terry, A Myatt, CS Biyani

**P4-13 A 5-year review of operative experience and indicative numbers in urological training in the U.K. and Ireland.**

R Robinson, JE Dyer, E Lee, KJ O'Flynn, T Terry

**P4-14 Updated indicative numbers: are they now achievable? A UK regional training perspective**

AK Nambiar, A Wright, O Fuge, L McGuinness, H Morton, J Cresswell

**P4-15 Publication rate of abstracts presented at the British Association of Urological Surgeons (BAUS) Annual Meeting – 10 years on**

AD Moon, C Harding

**P5-5 Bladder cancer in the neuropathic bladder**

A Mangera, K Dubey, D Drummond, SV Reid, PR Tophill

**P5-6 Initial experience of using the Urommune® sublingual vaccine for women with recurrent urinary tract infections (UTIs)**

BY Yang, D Stevens, S Foley

**P5-7 The MIC-KEY Button vesicostomy: A superior alternative for supra-pubic bladder drainage?**

J Seth, E Hazell, W Nugent, C Taylor, A Sahai, J Olsburgh

**P5-8 Evaluating Pad Weight Gain in Asymptomatic Women**

M Duffy, C Nicholls, A Gora, R Hamid, JL Ockrim, TJ Greenwell, MH Pakzad

**P5-9 A single centre experience with Bulkamid® a urethral bulking agent for the treatment of stress urinary incontinence in females**

FA Kamarizan, T Jabbar, M Saeed, J Filby, O Aboumarzouk, A Thomas

**P5-10 Management of Stress Urinary Incontinence in females after Spinal Cord Injury with mid-urethral tapes – a tertiary centre experience.**

V Sakalis, M Floyd, C Price, B Hartwell, P Guy, M C Davies

**P5-11 The efficacy of sacral neuromodulation for treatment of male voiding dysfunction**

M. Spilotros, S Malde, J Shah, M Pakzad, JL Ockrim, TJ Greenwell, R Hamid

**P5-12 The Outcomes In Women With None Obstructive Urinary Retention and Detrusor Underactivity Treated By Sacral Neuromodulation**

V Phe, EM Solomon, J Jenks, N Sihra, J Panicker, R Hamid, JL Ockrim, TJ Greenwell, MH Pakzad

**P5-13 Percutaneous nerve stimulation for overactive bladder: cost-effectiveness compared to mono and dual pharmacotherapy**

J Jenks, E Solomon, S Malde, M Spilotros, R Hamid, M Pakzad, TJ Greenwell, JL Ockrim

**P5-14 Sacral Nerve Stimulation versus Botox for Medically Refractory Overactive Bladder: A Contemporary Review of UK Clinician and Patients' Perspectives**

R Nobrega, S Malde, T Greenwell, R Pickard, JL Ockrim, C Harding

**P5-15 The Efficacy and Safety of OnabotulinumtoxinA and Solifenacin Compared to Placebo in Solifenacin-Naïve Patients with Idiopathic Overactive Bladder: Results from a Multicentre, Randomised, Double-Blind Trial**

S Sriram, S Herschorn, A Kohan, P Aliotta, K McCammon, S Abrams, W Lam, K Everaert

### ePoster Session 5

## Female Urology and Bladder Dysfunction

Wednesday 29 June • 1030-1215 • Room 4

**P5-1 Results of the British Association of Urological Surgeons Female Stress Urinary Incontinence Procedures Outcomes Audit**

S Cashman, N Thiruchelvam, R Morley

**P5-2 Female urethral diverticula: Presenting features and symptomatic outcomes**

S Malde, N Sihra, S Naseeri, MH Pakzad, R Hamid, PJR Shah, JL Ockrim, TJ Greenwell

**P5-3 Can Pre-Operative Mri Characteristics Predict New Onset Urodynamically Proven Stress Urinary Incontinence Post Excision Of Female Urethral Diverticulum.**

S Malde, N Sihra, M Spilotros, S Naseeri, MH Pakzad, R Hamid, JL Ockrim, TJ Greenwell

**P5-4 Total pelvic exenteration for locally advanced and recurrent rectal cancer: Urological outcomes and adverse events**

O Khan, D Patsouras, R Thuairaja, MS Khan, A Schizas, M George, A Sahai



## ePosters

**P5-16 OnabotulinumtoxinA in refractory overactive bladder: Licensed vs traditional dose**

J Eldred-Evans, J Seth, C Dowson, S Malde, C Taylor, J Watkins, MS Khan, P Dasgupta, A Sahai

**P5-17 Urinary tract infections in the intradetrusor Botox® population**

E White, S Ahmed, J Clark, R Walker, T Nitkunan

**P5-18 Consistent and Durable Improvements in Quality of Life with Long-Term OnabotulinumtoxinA Treatment in Patients with Overactive Bladder**

CR Chapple, M Drake, D Ginsberg, V Nitti, S Radomski, A Gousse, A Magyar, JP Nicandro, A Kaufmann

**P5-19 Overnight ambulatory urodynamics findings in patients with nocturia and/or nocturnal enuresis**

E Solomon, M Duffy, S Malde, M Pakzad, R Hamid, TJ Greenwell, JL Ockrim

**P5-20 The correlation between retrograde leak point pressure and 24-hour pad weight for men with post prostatectomy incontinence**

E Solomon, S Malde, M Spilotros, M Pakzad, R Hamid, PJR Shah, TJ Greenwell, JL Ockrim

**P6-5 Length of stay and supported discharge following laparoscopic nephrectomy: Experiences of a regional cancer centre**

FG Ghumman, S Nazad, F Kum, MKM Sheriff

**P6-6 The Training Concept of Whole Procedure Equivalent applied to Laparoscopic Renal Surgery. A Single Surgeon's Experience.**

P Rouse, S Garnett, S Ahmed, P Grange

**P6-7 How does ureteroscopy prior to nephroureterectomy impact on the patient pathway and oncologic outcomes in a UK tertiary referral centre?**

A Pai, R Hilbert, A Ali, N Barber

**P6-8 Robotic Assisted Nephro-ureterectomy for Upper Urinary Tract Urothelial Carcinoma: A Large Single Centre UK Experience.**

A Pai, M Hussain, A Ali, R Hilbert, G Mueller, A Emara, N Barber

**P6-9 Practice and Outcomes in the Endoscopic Management of Upper Tract TCC – Initial Results from the BAUS Registry**

JM Withington

**P6-10 Acute toxicity data from POUT: a phase III randomised trial of peri-operative chemotherapy versus surveillance in upper tract urothelial cancer**

AJ Birtle, L Maynard, M Johnson, R Kockelbergh, R Jones, J Chester, J Catto, A Blacker, E Hall, On behalf of the POUT TMG

**P6-11 The Surgical Management of Complex Bilateral Renal Cancer - Are We Getting It Right?**

N Lobo, E Anastasiadis, A Fernando, TS O'Brien

**P6-12 How we manage small intratesticular lesions - A single centre experience**

EWY Lee, K Biddle, F Chaudhry, F Douglas, N Kardaman, BC Thomas

**P6-13 Minimally invasive retroperitoneal lymph node dissection (MI-RPLND) – potential additional option for low volume stage 2 seminoma?**

DL Nicol, R Huddart, A Reid, E Mayer

**P6-14 Cryoablation outcomes for small renal masses: 2004-2015**

P Brousil, W Lam, G Ibe, G Munneke, M Gonsalves, U Patel, S Sandhu, P Le Roux, C Anderson

**P6-15 Is it safe to leave a renal biopsy proven oncocytoma alone? An observational cohort study**

M Moghul, BP Rai, A Abroaf, M Hosny, S Agarwal, P Nathan, T Lane, D Hanbury, N Vasdev, J Adshead

## ePoster Session 6

## Renal and Testis Cancer: Organ Sparing and Reducing Morbidity

Wednesday 29 June • 1030-1200 • Room 12

**P6-1 Significance of Negative Margin in Nephron Sparing Nephrectomy and its Implications on Disease Free Survival**

A Shafik, A Kodera, T King, N Hicks, T Chen, A Makar

**P6-2 A century in laparoscopic zero-ischæmia partial nephrectomy in the UK**

RH Gray, AS Fernando, P Grange, G Kooiman

**P6-3 Extending indications in robotic partial nephrectomy: the development of the practice after 200 cases**

F Al-khalidi, W Lam, J Dargan, G Blecher, R Catterwell, S Van Rij, B Challacombe

**P6-4 Robotic versus laparoscopic nephrectomy from a single centre: are we comparing apples with oranges?**

W Lam, M Chakravorty, T Malthouse, J Dargan, A Kadirvelarasan, N Doeuk, B Challacombe

## ePosters

**P6-16 The Small Renal Mass-changing the treatment paradigm**

X Cheng, I Ioannidis, M Tran, F Mumtaz, G Webster, M Al-Akraa, S El-Sheik, A Goode, M Aitchison, S Tadtayev

**P6-17 The role of biopsy in the management of small renal masses**

CR Jelley, H Bardgett, R Singh, SK Addla

**P6-18 Radical nephrectomy and nephroureterectomy practice in the United Kingdom: BAUS Data (2012-2014) Analysis - Trends in blood transfusion rate and complications**

U Mufti, V Hanchanale, S Fowler, F Keeley, CS Biyani, S Jain

### ePoster Session 7

## Surgical Andrology (Urethral and Penile) and Infertility

Wednesday 29 June • 1330-1445 • Room 3A/B

**P7-1 Augmented non-transecting urethroplasty for bulbar urethral strictures**

S Bugeja, S Ivaz, A Frost, DE Andrich, AR Mundy

**P7-2 Full-length urethral stricture disease secondary to Lichen Sclerosus: long-term outcomes of urethroplasty**

NE Boxall, A Mangera, RD Inman, CR Chapple

**P7-3 Management of sphincter weakness incontinence (SWI) in patients with concomitant bladder neck contractures (BNC) after the treatment of prostate cancer**

S Bugeja, S Ivaz, A Frost, DE Andrich, AR Mundy

**P7-4 Can Filling Phase Urodynamic Parameters Predict The Success Of The Bulbar Artificial Urinary Sphincter In Treating Post-Prostatectomy Incontinence?**

EM Solomon, R Veeterapillay, CK Harding, TJ Greenwell

**P7-5 Validation of a Patient Reported Outcome Measure (PROM) for penile curvature surgery**

AE Campbell, D Akiboye, S Mukhtar, M Jackson, N Watkin

**P7-6 Modified protocol using Collagenase clostridium histolyticum (CCH) for the treatment of Peyronie's disease**

AM Abdel Raheem, M Capece, G Garaffa, N Christopher, DJ Ralph

**P7-7 High Flow Priapism is associated with high risk of Erectile Dysfunction and corporal fibrosis**

O Kalejaiye, C Fontaine, S Larsen, J Langston, M Walkden, N Christopher, S Minhas, A Muneer, G Garaffa, DJ Ralph

**P7-8 Penile prosthesis implantation after Female to Male total phallic reconstruction: a single-center retrospective analysis on 247 consecutive patients**

M Falcone, G Garaffa, A Gillo, A Raheem, M Capece, AN Christopher, DJ Ralph

**P7-9 The significance of close surgical margins in organ sparing surgery for penile squamous cell cancer**

D Sri, A Sujenthiran, W Lam, C Corbishley, BE Ayres, N Watkin

**P7-10 Prospective study comparing Videoendoscopic radical Inguinal Lymph node dissection (VEILND) with Open radical inguinal lymphnode dissection (OILND) for penile cancer in 51 consecutive patients over a five year period**

V Kumar

**P7-11 Surgical management of fungating inguinal masses in penile cancer with myocutaneous flap reconstruction**

T Mahesan, A Coscione, D Sharma, M Soldin, N Watkin, B Ayres

**P7-12 Dynamic Sentinel Node Biopsy of inguinal nodes in squamous carcinoma of the Male Urethra**

T Mahesan, A Coscione, C Corbishley, T Yap, B Ayres, S Heenan, N Watkin

**P7-13 Do alcohol, smoking and male age affect semen parameters and IVF/ICSI outcomes?**

K Almekaty, FA Al-Mashat, S Abumelha, C Poullis, TL Yap, N Rushwan, H Abdallah, MY Thum, S Minhas

**P7-14 Live Birth Rates In Men With Non-Obstructive Azoospermia (NOA) Undergoing Microdissection Testicular Sperm Extraction (mTESE)**

CA Poullis, S Abumelha, FA Al-Mashat, K Almekaty, N Rushwan, TL Yap, MY Thum, H Abdallah, S Minhas

**P7-15 Human Spermatogonial Stem Cell culture and effective cryopreservation – a step towards clinical application.**

RK Sandher, H O'Keefe, K McEleny, M Herbert, RS Pickard

### ePoster Session 8

## General Urology

Wednesday 29 June • 1330-1515 • Room 4

**P8-1 An Emerging HoLEP Reality: 50W HoLEP Surgery Outcomes Data in the UK and the Use of TRUS Volume to Predict Enucleation Time**

FA Khan, MA Saleemi, S Taneja, A Alam, BJR Barrass, M Al-Sheikh, I Nunney

## ePosters

- P8-2 Feasibility and favourable factors for day-case Holmium laser enucleation of the prostate (HoLEP)**  
SM Lee, F Crystal, S Kapoor, A Tasleem, P Acher
- P8-3 Evaluation of the learning curve for thulium laser transurethral vaporessection of the prostate (ThuVAP)**  
AS Sharaf, JM Worthington, H Hashim UNBLOCS TEAM
- P8-4 Thulium-Laser Enucleation of the Prostate (ThuLEP) as a technique for Treatment of Benign Prostatic Hyperplasia: Evaluation of a Six-Year experience in an Urban Teaching Hospital**  
IN Noaman, KL Lee, JA Anderson, HK Krasnowski
- P8-5 Photoselective Vaporization of the Prostate by 180-W GreenLight Laser versus Bipolar Transurethral Resection: A Subset Analysis of the GOLIATH Trial**  
JA Thomas, P Zanteck, A Bachmann, N Barber, G Muir, J Benejam, J-U Stolzenberg, F Bruyere, A Thorpe, R Morton
- P8-6 Initial Outcomes for Prostate Artery Embolisation, an alternative to surgery for BPH**  
KA Wong, A Parthipun, A Garcia, S Sohel, S Pandian, S Van Rij, B Challacombe, T Sabharwal, R Popert
- P8-7 'One-stop' LUTS clinic: providing patient satisfaction and cost effectiveness in benign urology**  
C Dunford, S Watts, S Kuruvilla, A Zachou, T Rashid
- P8-8 The Early and Late Effects of Cancer on Male Fertility.**  
CA Poullis, S Abumelha, FA Al-Mashat, K Almekaty, TL Yap, E Williamson, DJ Ralph, S Minhas
- P8-9 Post vasectomy semen analysis (PVSA): changing sample timing may have unexpected consequences on outcomes.**  
A Zreik, N Smyth, J Taylor
- P8-10 Age of boys at time of orchidopexy surgery, a single practice review**  
STM Rizvi
- P8-11 Outcomes of emergency scrotal exploration for acute scrotal pain: Contemporary series from tertiary care hospital.**  
A Anwar, GM Nandwani, R Singh, R Chahal, AB Stewart, JA Forster, SK Addla
- P8-12 Management of high grade blunt renal trauma: a 10-year single UK paediatric centre experience**  
KY Wong, R Jeeneea, A Healey, L Abernerthy, S Kenny, HJ Corbett, HF McAndrew, PD Losty
- P8-13 Outcomes of renal trauma from a major UK trauma centre: 3-year retrospective review**  
Maxim Johnston, D McDonnell, B Somani
- P8-14 Adopting a 'One-Stop' Approach to all new Urology Outpatient referrals**  
J Durrant, S Kamble, B Barrass, F Khan, M Saleemi, A Alam, M Al-Sheik, S Taneja
- P8-15 Risk of thrombosis and bleeding in urological cancer surgery (ROTBUS Cancer): Series of systematic reviews and meta-analyses**  
KAO Tikkinen, S Craigie, A Agarwal, PD Violette, G Novara, R Cartwright, R Naspro, MK Gould, PM Sandset, GH Guyatt
- P8-16 Minimising ureteric injury during complex-major colorectal surgery**  
L Teo, I Jenkins, G Hellawell
- P8-17 Better care at lower cost; Reducing harm from catheter-associated urinary tract infections**  
L Clarke, J Taylor, D Rowbotham, S Grayson, F Morris, C Blears, R Simpson, B Kadler, K O'Flynn, D Shackley
- P8-18 Flexible cystoscopy for the investigation of recurrent Urinary Tract Infection (UTI) – How helpful is it really?**  
N Smyth, A Zreik, J Taylor
- P8-19 Penile fracture: Conservative versus surgical; a meta-analysis**  
T Amer, R Wilson, P Chlosta, S AlBuheissi, O Abomarzouk
- P8-20 How confident do general practitioners feel about urology?**  
NE Boxall, DJ Rosario

## ePoster Session 9

## History of Urology

Wednesday 29 June • 1430-1530 • Room 12

- P9-1 Showmen In Urology**  
AO Auer, D Hodgson
- P9-2 Alexander Randall: A major contributor to the understanding of the genesis of renal calculi**  
M Hadjipavlou, MJA Perry, KM Anson
- P9-3 The contribution of Sir Thomas Spencer Wells to urology**  
MS Wanis, JC Goddard
- P9-4 John Wickham - The Godfather**  
AO Auer, D Hodgson, PM Thompson

## ePosters

**P9-5 Reed Miller Nesbit: So Much More Than A Straightening Procedure**

OC Putt, IP Wharton

**P9-6 The rise and fall of occupational bladder cancer in the Western World**

MS Wanis, M Hadjipavlou

**P9-7 The 'Holy Stones'**

MSV Vedanayagam, K Farrag, I Dickinson, S Sriprasad

**P9-8 How Intersex Children in the Dominican Republic changed the face of Urology**

T Mahesan, UR Reddy

**P9-9 From Death sentence to improved Quality of life; The evolution of management of Malignant Ureteric Obstruction.**

JG Callear, A Bourdomis, P Naidu, S Khan

**P9-10 'Transgender': Mythology to modern times!**

A Reekhaye, M El-Hadi, M Vedayanagam, J Nariculam, S Sriprasad

**P10-5 Medium to long term follow up of a large UK cohort of active monitoring patients**

AJ Bennett, MT Jefferies, O Hughes, K Narahari, H Kynaston

**P10-6 Focal HIFU for Treatment of Localised Prostate Cancer: A Multi-centre Registry Experience**

S Guillaumier, S Hamid, SC Charman, J van der Meulen, N McCartan, K Shah, R Hindley, R Nigam, T Dudderidge, N Afzal, A Cornaby, H Lewi, R Persad, CM Moore, M Arya, M Emberton, HU Ahmed

**P10-7 Development and internal validation of a multivariable prediction model for biochemical failure after focal salvage high intensity focused ultrasound for locally recurrent prostate cancer: presentation of a risk score for individual patient prognosis.**

M Peters, TT Shah, A Kanthabalan, N McCartan, JRN van der Voort van Zyp, MA Moerland, M van Vulpen, R Hindley, M Emberton, HU Ahmed

**P10-8 Does Extended Pelvic Lymph Node Dissection Increase Morbidity and Mortality in Men Undergoing robotic radical prostatectomy?**

KE Hughes, T Nambirajan, G Riley, M Kumar

**P10-9 Management of pathological lymph node positive prostate cancer post radical prostatectomy: Recent experience from a single UK centre.**

A Kodera, T King, SA Ehsanullah, A Shafik, A Makar

**P10-10 Intraoperative Frozen Section of the prostate during Robotic Assisted Radical Prostatectomy (RARP) improves erectile function rates and decreases positive margin rates-United Kingdom's first series of 100 Cases**

N Vasdev, BP Rai, S Agarwal, G Mohan, J Adshead

**P10-12 Development of Indicators to assess Intermediate treatment-related Urinary Complications following Radical Prostatectomy**

A Sujenthiran, M Parry, S Charman, J Nossiter, A Aggarwal, H Payne, N Clarke, J van der Meulen, P Cathcart

**P10-13 What Parameters Affect Continence after Radical Prostatectomy?**

IDN Rudd, R Zakri, B Hearnden, J Pain, M Thomas, B Eddy

**P10-14 3-month pad use is a reliable predictor of long term continence recovery in men undergoing robotic Radical prostatectomy**

AN Sridhar, PJ Cathcart, G Basnett, TP Briggs, S Nathan, JD Kelly

**P10-15 Does supersensitive PSA add additional prognostic benefit to predicting biochemical recurrence in post radical prostatectomy patients at medium term follow up?**

KE Hughes, T Nambirajan, G Riley, M Kumar

### ePoster Session 10

## Prostate Cancer Treatment: Choices and Outcomes

Thursday 30 June • 1200-1315 • Room 4

**P10-1 The BAUS Radical Prostatectomy audit – an update on current practice (2014).**

C Miller, A McNeill, N Campaign, L Hounsome, S Fowler, JS McGrath

**P10-2 Are there differences in radical prostatectomy practice between centres and surgeons performing differing volumes of surgery?**

C Miller, A McNeill, N Campaign, L Hounsome, S Fowler, JS McGrath

**P10-3 Factors that affect decision-making for radical prostatectomy in elderly patients with prostate cancer: Results from the National Prostate Cancer Audit**

MG Parry, A Sujenthiran, A Aggarwal, P Cathcart, S Charman, J Nossiter, H Payne, J van der Meulen, N Clarke

**P10-4 An improved clinical risk stratification system to better predict cancer specific mortality at diagnosis in primary non-metastatic prostate cancer.**

VJ Gnanapragasam, A Lophatananon, K Muir, A Gavin, D Greenberg

# ePosters

## ePoster Session 11

### Basic Science

Thursday 30 June 1200-1300 · Room 12

**P11-1 UroMark - A highly multiplex biomarker for the detection of bladder cancer**

A Feber, P de Winter, P Dhami, M Martinez-Fernandez, DS Paul, A Hynes-Allen, WS Tan, P Gurng, S Rodeny, A Mehmood, F Villacampa, F de la Rosa, C Jameson, KK Cheng, MP Zeegers, R Bryan, N James, JM Paramio, A Freeman, S Beck, JD Kelly

**P11-2 The Translational Potential of Cell Free Mutant DNA for Muscle Invasive Bladder Cancer**

KMP Patel, K vd Vos, C Smith, J Morris, C Massie, VJ Gnanapragasam, DE Neal, B v Rhijn, M vd Heijden, N Rosenfeld

**P11-3 Low INPP4B expression predicts poor prognosis locally advanced and metastatic bladder cancer**

WS Tan, PMS Gurung, C Ackerman, S Rodney, P de Winter, A Freeman, C Jameson, T Powles, A Feber, JD Kelly

**P11-4 Uncovering patterns of copy number aberrations in penile cancer**

S Rodney, A Feber, M Arya, P De Winter, M Saqib, R Nigam, P Malone, S Tan, M Christodoulidou, V Sahdev, M Lechner, A Freeman, C Jameson, A Muneer, S Beck, J Kelly

**P11-5 Does PIK3CA Copy Number Aberration lead to activation of the PI3K-AKT-mTOR Pathway?**

A Adimonye, E Stankiewicz, S Kudahetti, R Rajab, C Corbishley, Y-J Lu, N Watkin, D Berney

**P11-6 EMT markers within M1 diagnostic prostate biopsies correlate with stem like phenotype and loss of AR signalling**

K Hiew, SM Bokobza, CA Hart, T Elliott, NR Smith, M Brown, NW Clarke

**P11-7 Exosomal RNA as a source of urine biomarkers for prostate cancer**

MYH Yazbek Hanna

**P11-8 A Urinary Peptide Biomarker Panel to Identify Significant Prostate Cancer**

MJS Salji, A Latosinska, A McKay, J Clark, H Mischak, HY Leung

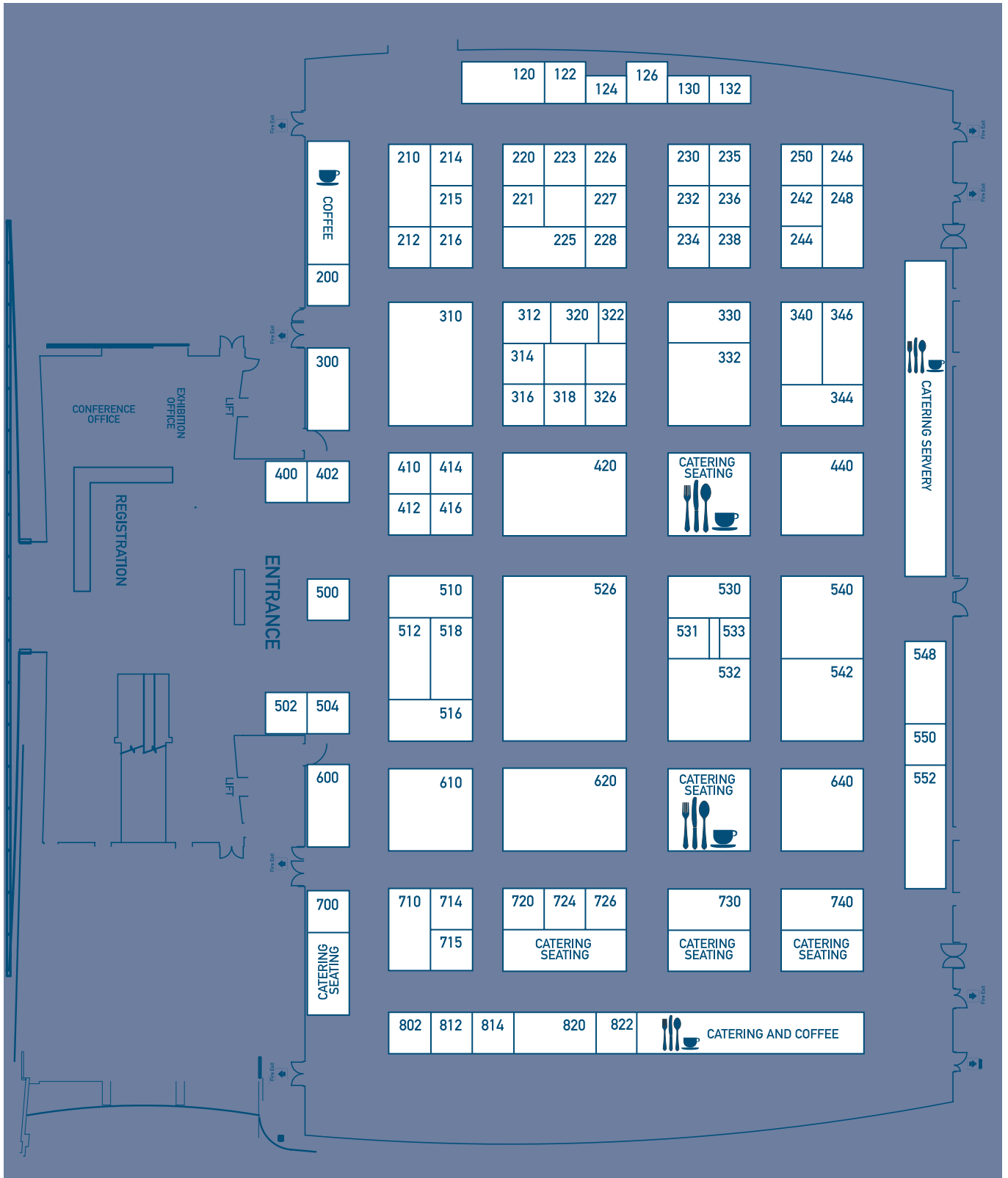
**P11-9 Neutrophil gelatinase-associated lipocalin (NGAL) as a biomarker of renal injury in patients with ureteric stones**

M Bolgeri, K Farrag, A Reche, P Manghat, S Sriprasad

**P11-10 An in vitro model to study cystinuria**

HL Rhodes, LK Farmer, T Knight, MN Woodward, GI Welsh, RJM Coward

# Exhibition Plan



# List of Exhibitors

<i>Company</i>	<i>Stand</i>	<i>Company</i>	<i>Stand</i>
A.Menarini Farmaceutica Internazionale	230	Hospital Services	715
Albyn Medical Ltd	330	iMEDicare Ltd	502
Allergan	730	Integra Neurosciences	242
Amoipharm	250	Interact Medical	340
AngioDynamics UK Ltd	228	Intuitive Surgical Sàrl	518
Aquilant Endoscopy	236	Invivo Phillips	714
Arquer Diagnostics LTD	246	Ipsen Limited	235
Aspire Pharma Ltd	504	Janssen	344
Astellas Pharma Ltd (ONCOLOGY)	526	Jump Start Consulting	124
Astellas Pharma Ltd (UROLOGY)	526	Karl Storz Endoscopy (UK) Ltd	620
B. Braun Medical Ltd	300	Koelis	802
BAUN	220	Laborie Medical Tech Europe Ltd	512
BAUS and JCU	542	LogixX Pharma	822
BAUS Meeting Room	120	MDU Services Limited	533
BAUS on Demand BOD-POD'S	548	Medical Billing & Collection	322
Bayer Healthcare	238	Mediplus Ltd	700
BJUI	227	Medtronic Ltd.	500
B-K Medical	600	Mentoring Sessions	214, 215, 320, 312, 314
Boston Scientific Ltd	310	Mobile Health Systems (UK) Ltd	440
Cariad Technologies Ltd	216	NeoTract	402
Coffee / Catering	830	Novartis Pharmaceuticals UK Ltd	724
Catering	350	Nuada Medical HIFU Ltd	740
Catering Seating	430	Olympus Medical	420
Catering Seating	630	Oncology Systems Limited	814
Catering Seating	702	Orchid Male Cancer	223
Catering Seating	728	Pnn Medical A/S	122
Catering Seating	732	PORGES - A Coloplast Division	332
Catering Seating	744	Premium Medical Protection Ltd	234
Cellmark	326	Promed Limited	414
Coffee	202	Prostate Cancer UK	200
Combat Medical Ltd	410	Richard Wolf UK Ltd	532
Cook Medical	530	Rocamed	710
DAAX Limited	531	Sigmacon (UK) Ltd	248 & 346
Dantec Dynamics Limited	212	Signostics	820
Dendrite	726	SmartTarget Limited	720
Device Technologies UK Ltd	318	Speciality European Pharma Ltd	412
ePosters	640	Swedish Orphan Biovitum (SOBI)	132
European Association of Urology	324	Synergo-Medical Enterprises Ltd	510
Evolan Pharma AB	130	Syner-Med	126
Ferring	812	Teleflex Medical	244
Fight Bladder Cancer	316	Teva UK Limited	400
Genesis Medical Ltd	516	The Urology Foundation	221
Glasgow City Marketing Bureau	550	Trial Information	552
History of Urology	540	Urology News	226
Hitachi Medical Systems	610	Venn Healthcare	210
Hospital Innovations	416	Verathon Medical (UK) Ltd.	225
		Zhuhai Pusen Medical Technology co., LTD.	232



## Teaching and Skills Courses

### Introduction

#### High quality, expert tuition throughout the week...

BAUS 2016 promises an excellent BAUS Conference and Scientific Programme. The teaching and skills courses this year provide breadth, diversity and national expertise and I am confident that this teaching programme has something to appeal to all delegates.

The courses will run parallel to the main meeting and be undertaken in smaller adjacent meeting rooms with a limited number of available spaces according to the particular course. The small number of available spaces ensures focussed interaction with the experts and, in the skills workshops, enables participants' to learn clinical skills under expert supervision with a high tutor to participant ratio to optimise that learning experience.

Based on the collated feedback and attendance figures from participants last year, the teaching and skills programme has undergone shrinkage for 2016 in which there are a smaller number of courses from previous years with several new courses added to refresh the overall programme. Many of these courses have proven so popular in previous years that they have 'sold out' before the meeting and I would urge you to pre-book to optimise your chances of guaranteeing a place.

New for this year are teaching courses on the Egan model of mentoring, Prosthetic Surgery in Urology and the BURST Research Course, all which are likely to prove equally popular.

We are heavily reliant on your feedback after attending these courses which we use to update and optimise the educational experience that every single course provides.

This year please leave feedback via the 2016 BAUS Conference App.

If you have any ideas for new or existing courses for the BAUS 2017 meeting in Glasgow I will be very receptive to your thoughts and comments.

I am most grateful to the course directors, faculty, and BAUS staff (Harry and Hannah in particular) who have dedicated their time and expertise towards arrangement of this year's busy and effective programme schedule.

The programme committee are very grateful to industry for their sponsorship specifically – Bard Biopsy, BK Medical, Boston Scientific, BXT Accelyon, Cook Medical, Karl Storz - Endoskope, Lumenis, Manatech, Medtronic & Covidien, Neotract, Olympus Medical and Porges, a Coloplast Division.

All the best,

**Paul Jones**

BAUS Honorary Secretary Elect





## Teaching and Skills Courses

No.	Course Title	Location	Time	No. of Spaces	Cost (£)	Course Director
<b>MONDAY 27 JUNE</b>						
1	Skills Course: Ureteroscopy and Laser Lithotripsy	Room 11 B/C	1000-1200	20	30	Mr Matthew Bultitude & Ms Alison Ramsey
2	Skills Course: Ureteroscopy and Laser Lithotripsy	Room 11 B/C	1230-1430	20	30	Mr Matthew Bultitude & Ms Alison Ramsey
3	Skills Course: PCNL Access	Room 11 B/C	1500-1700	20	30	Mr Stephen Brown
<b>TUESDAY 28 JUNE</b>						
4	Teaching Course: Assessment and Management of the Female Patient with USUI	Room 11A	0845-1045	30	30	Ms Tamsin Greenwell
5	Teaching Course: Mentoring: The Egan Model	Room 13	0845-1045	40	30	Mr Tim Terry
6	Skills Course: PCNL Access	Room 11B/C	0845-1045	21	30	Mr Stuart Irving
7	Teaching Course: BAUS and BURST Research Collaborative 2016	Room 13	1130-1430	40	30	Mr Ben Lamb & Ms Jo Cresswell
8	Skills Course: New Technologies in BPH Surgery	Room 11B/C	1130-1330	16	30	Mr Mark Cynk & Mr Gordon Muir
9	Teaching Course: Prosthetic Surgery in Urology	Room 11A	1230-1430	40	30	Mr Asif Muneer
10	Off-site Skills Course: Ultrasound for Urologist	Broadgreen Hospital	0900-1200	18	30	Ms Rebecca Hamm Dr Jane Bedfield
11	Off-site Skills Course: Ultrasound for Urologist	Broadgreen Hospital	1300-1600	18	30	Ms Rebecca Hamm Dr Jane Bedfield
<b>WEDNESDAY 29 JUNE</b>						
12	Teaching Course: Genitourinary Trauma	Room 11A	0845-1045	40	30	Mr Duncan Summerton
13	Skills Course: Lapascopic Suturing	Room 11B/C	0845-1045	20	30	Mr Richard Coulthard
14	Teaching Course : Robotic Urology: Safely Starting Pelvic and Upper Tract Procedures	Room 13	0900-1100	40	30	Mr Jim Adshead
15	Teaching Course: Urology and the Law; How to avoid litigation and what to do when you get there	Room 11A	1130-1330	50	30	Mr Julian Shah & Mr John Reyanrd
16	Teaching Course: Pratical Andrology for the General Urologist	Room 13	1130-1330	50	30	Mr Asif Muneer & Mr Rowland Rees
17	Skills Course: Prostate Biopsy	Room 11B/C	1130-1330	20	30	Mr Rick Popert
18	Teaching Course: The Modern Management of Urinary Stone Disease	Room 11A	1430-1630	70	30	Mr Daron Smith
19	Teaching Course: Effective peer review in 2016	Room 13	1430-1630	30	30	Professor Prokar Dasgupta
20	Off-site Skills Course: Surgical Anatomy for the Urologist	Human Anatomy Resource Centre	1300-1700	20	£120	Ms Tamsin Greenwell

### Skills Course 1

## Ureteroscopy and Laser Lithotripsy

Monday 27 June 2016      10:00-12:00  
20 Places      Room 11 B/C

Directors: [Mr Matthew Bultitude](#) & [Ms Alison Ramsey](#)

### Outline

The ability to perform safe, effective ureteroscopy is an essential requirement for all practicing urologists. The course will provide an extensive overview of all aspects of semi rigid and flexible ureteroscopy including equipment and technique, including top practical tips and methods of lithotripsy. This will be delivered within small practical groups directed by expert faculty. Delegates will have the opportunity to use the holmium laser with rigid and flexible ureteroscopy, guided by experienced endourologists. Comprehensive hand outs will be provided.

### Faculty

**Mr Matthew Bultitude**, Guy's and St. Thomas' Hospital NHS Trust  
**Ms Alison Ramsay**, Gartnavel General Hospital  
**Mr Daron Smith**, University College Hospital  
**Ms Sian Allen**, University College London Hospital  
**Mr Simon Bott**, Frimley Park Hospital  
**Mr Jake Patterson**, Royal Hallamshire Hospital, Sheffield  
**Mr Sarath Nalagatla**, Hairmyres Hospital, Glasgow  
**Mr Ben Thomas**, Western General Hospital  
**Mr Nick Cohen**, Aberdeen Royal Infirmary,  
**Mr Greg Kata**, Ninewells Hospital  
**Ms Angela Cottrell**, Royal Devon & Exeter Hospital

### Skills Course 2

## Ureteroscopy and Laser Lithotripsy

Monday 27 June 2016      12:30 - 14:30  
20 Places      Room 11 B/C

Directors: [Mr Matthew Bultitude](#) & [Ms Alison Ramsey](#)

### Outline

The ability to perform safe, effective ureteroscopy is an essential requirement for all practicing urologists. The course will provide an extensive overview of all aspects of semi rigid and flexible ureteroscopy including equipment and technique, including top practical tips and methods of lithotripsy. This will be delivered within small practical groups directed by expert faculty. Delegates will have the opportunity to use the holmium laser with rigid and flexible ureteroscopy, guided by experienced endourologists. Comprehensive hand outs will be provided.

### Faculty

**Mr Matthew Bultitude**, Guy's and St. Thomas' Hospital NHS Trust  
**Ms Alison Ramsay**, Gartnavel General Hospital  
**Mr Oliver Wiseman**, Addenbrooke's Hospital  
**Mr Simon Bott**, Frimley Park Hospital  
**Mr Jake Patterson**, Royal Hallamshire Hospital, Sheffield  
**Mr Ranan DasGupta**, St Mary's Hospital  
**Mr Sunil Kumar**, Royal Berkshire Hospital  
**Mr Sarath Nalagatla**, Hairmyres Hospital, Glasgow  
**Mr Ben Thomas**, Western General Hospital  
**Mr Nick Cohen**, Aberdeen Royal Infirmary,  
**Ms Angela Cottrell**, Royal Devon & Exeter Hospital  
**Mr Bob Meddings**, The Ayr Hospital

### Skills Course 3

## Percutaneous Nephrolithotomy (PCNL) Access

Monday 27 June 2016      1500 - 1700  
20 Places      Room 11 B/C

Director: [Mr Stephen Brown](#)

### Outline

Proficiency in PCNL is essential for all practising endourological surgeons. This course will focus on both the theoretical and practical aspects of PCNL. There will be an emphasis on the practical aspects. The course will cover both prone and supine PCNL, case selection and practical surgical skills including access and tract dilatation. The course is delivered by recognised experts in PCNL using small group teaching techniques with the aid of simulation models. The course allows delegates to gain skills in puncture, tract dilatation by both balloon and rigid dilatation methods, intra-renal surgery and stone retrieval. A comprehensive range of demonstration equipment will be available for use during the course. This dry lab course is ideal for ST 3-5 level.

### Objectives

By the end of the course the delegate will be expected to have received tuition and practical assistance in performing safe renal access, tract dilatation and intra-renal surgery.

### Faculty

**Stephen Brown**, Stepping Hill NHS trust Hospital Stockport  
**Dr. Alfred Pollard**, Consultant Radiologist, Stepping Hill Hospital NHS trust Stockport  
**Mr Donald Neilson**, East Lancashire hospital NHS trust, Blackburn  
**Mr Max Mokete**, Lancashire teaching hospital NHS trust, Preston



**Mr Shalom Srirangham**, East Lancashire hospital NHS trust, Blackburn

**Dr. Niall Lynch**, Consultant Radiologist, Stepping Hill Hospital NHS trust Stockport

**Ms Zara Gall**, Stepping Hill Hospital, Stockport

## Teaching Course 4

### Assessment and Management of the Female Patient with USUI

Tuesday 28 June 2016 0845 - 1045  
30 Places Room 11A

Director: Ms Tamsin Greenwell

#### Outline

This course is designed to provide an understanding of the anatomy, pathophysiology, investigation and treatment of the female patient with stress urinary incontinence including the management of tape complications. By the end of the 2 hour session you will understand the anatomy of the female pelvis relevant to the pathophysiology and surgical treatment of USUI, the investigative techniques and their applications in the diagnosis of USUI and their pitfalls and relevance to guidelines and the conservative and operative treatments available – with the aim of knowing: which, when, why and how. The course will end with an interactive MDT allowing you to use your newly acquired knowledge in a real life simulation. The faculty is a six-hander made of established and new consultants with significant expertise in this field and aims to provide an educational and entertaining 2 hours.

#### Faculty

**Ms Tamsin Greenwell**, University College Hospital, London

**Mr Jeremy Ockrim**, University College Hospital, London

**Ms Suzie Venn**, Western Sussex Hospital Trust, Sussex

**Ms Suzanne Biers**, Addenbrookes Hospital, Cambridge

**Mr Mo Belal**, Queen Elizabeth Hospital, Birmingham

**Mr Richard Parkinson**, Nottingham City Hospital

## Teaching Course 5

### Mentoring: The Egan Model

Tuesday 28 June 2016 0845 - 1045  
40 Places Room 13

Director: Mr Tim Terry

#### Outline

This is an interactive course to demonstrate what formal mentoring is and when it should be used. There are many mentoring models but in this course the Egan model is exclusively used.

#### Objectives

The aims of the course are to;

- define what mentoring is
- explain the Egan model as one way to conduct mentoring sessions
- indicate when mentoring may be useful
- define the ethics behind the mentoring process
- define the mentoring contract
- explain the use of Myers- Briggs Type Indicator in the mentoring process
- demonstrate the importance of communication skills in formal mentoring
- develop mentoring skills in course delegates

The aims of the course will be delivered by;

1. pre-course work - delegates to access - [www.eastmidlandsmentoring.co.uk](http://www.eastmidlandsmentoring.co.uk), [www.mentoring.londondeanery.ac.uk](http://www.mentoring.londondeanery.ac.uk)  
BMJ Careers - Coaching and mentoring [careers.bmj.com/careers/advice/view-article.htm?id=20001206](http://careers.bmj.com/careers/advice/view-article.htm?id=20001206)  
creating a safe and quality assured coaching and mentoring [www.rcpsych.ac.uk/pdf/QA%20DocPT.pdf](http://www.rcpsych.ac.uk/pdf/QA%20DocPT.pdf)  
Coaching and Mentoring at Work, Mary Connor & Julia Pokora
2. didactic presentations on MBTI, Egan model, communication skills
3. role modelling stages of Egan model
4. use of interactive triads by delegates using Stage 1 of Egan model
5. the delivery of the course will be assessed by self administered questionnaire

#### Faculty

**Mr Gordon French**, Consultant Anaesthetist, Northampton, Director of Innovation East Midlands LETB

**Ms Nancy Redfern**, Consultant Anaesthetist, Newcastle, Previously APD North East Deanery

**Mr Tim Terry**, Leicester General Hospital, SAC Chair Urology

**Dr Christina Galatou**, Consultant Paediatric Anaesthetist, Royal Manchester Children's Hospital

**Dr Anne Brand**, Anaesthetist

## Skills Course 6

### Percutaneous Nephrolithotomy (PCNL) Access

Tuesday 28 June 2016 0845 - 1045  
21 Places Room 11 B/C

Director: Mr Stuart Irving

#### Outline

Proficiency in PCNL is essential for all practising endourological surgeons. This course will focus on both the

## Teaching and Skills Courses

theoretical and practical aspects of PCNL. There will be an emphasis on the practical aspects. The course will cover both prone and supine PCNL, case selection and practical surgical skills including access and tract dilatation. The course is delivered by recognised experts in PCNL using small group teaching techniques with the aid of simulation models. The course allows delegates to gain skills in puncture, tract dilatation by both balloon and rigid dilatation methods, intra-renal surgery and stone retrieval. A comprehensive range of demonstration equipment will be available for use during the course. This dry lab course is ideal for ST 3-5 level.

### Objectives

By the end of the course the delegate will be expected to have received tuition and practical assistance in performing safe renal access, tract dilatation and intra-renal surgery.

### Faculty

**Mr Stuart Irving**, Norfolk and Norwich University Hospital  
**Mr Rob Calvert**, Royal Liverpool University Hospital  
**Mr Jonathan Glass**, Guy's & St Thomas' Hospital Trust, London  
**Mr Subu Subramonian**, Queen Elizabeth Hospital, Birmingham  
**Mr William Finch**, Norfolk and Norwich University Hospital and James Paget University Hospital  
**Professor Sri Sriprasad**, Darrent Valley Hospital, Kent  
**Mr Stephen Gordon**, Epsom and St Helier University Hospitals.

## Teaching Course 7

### BAUS and BURST Research Collaborative Teaching Course 2016 *"A rough guide to clinical research: From study design to publication"*

Tuesday 28 June 2016      1130 - 1430  
 40 Places      Room 13

Directors: Mr Ben Lamb and Ms Jo Cresswell

### Outline

Research is a core part of NHS business. Many of us have ideas about how to improve patient care or to answer important clinical questions.

However, for many full-time clinicians the prospect of translating these questions into a successful research project can be daunting. The importance of real world research cannot be underestimated. Often it is clinicians in everyday practice who have the greatest understanding of the important questions to ask.

This course is designed for NHS clinicians who wish to gain insight into how to develop their research ideas from the initial design to getting their work published. Consultants and trainees in full-time NHS practice will have the opportunity to

learn about where to start with developing research questions, performing systematic review and planning for publication.

Our faculty will inspire and enthuse, with lots of advice and top tips for getting started. We encourage delegates to come armed with research topics that are important to them and their patients. As well as an overview of how to design your study, our faculty will offer specific advice to delegates on their projects in small group discussion.

### Aims

To inspire and enthuse delegates by giving them an insight into how to develop their research ideas from the initial design to getting their work published

### Objectives

By the end of the course participants will have an understanding of:

- 1) Why research is an important part of clinical practice
- 2) Research opportunities for clinicians at all levels
- 3) How to develop a research question
- 4) How to perform a systematic review
- 5) What makes a good research paper

There will be the opportunity to discuss your own research ideas with our expert faculty

### Timetable

11:30	Introduction and welcome (Mr Ben Lamb/ Ms Jo Cresswell)
11:35	5 Things I have learned about successful clinical research (Professor Mark Emberton)
11:55	Research opportunities for NHS consultants (Ms Jo Cresswell)
12:10	Research opportunities for trainees (Mr Ben Lamb)
12:25	How to develop a research question (Dr Mieke van Hemelrijck)
13:15	How to perform a systematic review (Dr Steven MacLennan and Dr Graeme MacLennan)
14:05	What makes a good (and publishable) research paper (Professor Prokar Dasgupta)
14:25	Thanks and Close

### Faculty

**Professor Mark Emberton**, University College London  
**Dr Mieke Van Hemelrijck**, Kings College London  
**Dr Graeme MacLennan**, University of Aberdeen  
**Professor Prokar Dasgupta**, Editor-in-Chief, Guy's Hospital, King's College London  
**Dr Steven MacLennan**, Research Fellow, University of Aberdeen  
**Mr Ben Lamb**, University College Hospital London  
**Ms Jo Cresswell**, James Cook University Hospital, Middlesbrough



## Skills Course 8

### New Technologies in BPH Surgery

Tuesday 28 June 2016 1130 - 1330  
16 Places Room 11 B/C

Directors: [Mr Mark Cynk](#) and [Mr Gordon Muir](#)

#### Outline

In recent years the options for the surgical management of bladder outflow obstruction secondary to bladder outflow obstruction have expanded due to the emergence of new technology. This course aims to provide an overview of the current role of bipolar TURP, HoLEP, Greenlight PVP and Urolift, as well as hands-on experience in a skills laboratory using simulated surgery under the guidance of mentors experienced in each technique. Comprehensive handouts will be provided.

#### Objectives

The course will include a brief introduction to each technique; its supporting evidence; and its current place in patient selection. Hands-on simulation of bipolar TURP, HoLEP, Greenlight prostate ablation, and Urolift will be provided, under supervision by experts in each procedure. Delegates will have the opportunity to organise for further simulation on the trade stands in the conference exhibition, as well the option of arranging mentorship and support to ensure safe and efficient introduction of these techniques in individual units.

#### Faculty

**Mr Mark Cynk**, Maidstone and Tunbridge Wells NHS Trust  
**Mr Gordon Muir**, King's College Hospital, London  
**Mr Rick Popert**, Guy's and St Thomas' NHS Trust, London  
**Professor Tom McNicolas**, Lister Hospital, Stevenage  
**Mr Neil Barber**, Frimley Park Hospital NHS Foundation Trust  
**Mr Richard Hindley**, North Hampshire Hospital, Basingstoke  
**Mr Kilian Walsh**, University College Hospital, Galway  
**Mr Simon Woodhams**, Western Sussex NHS Trust, Worthing

## Teaching Course 9

### Prosthetic Surgery in Urology

Tuesday 28 June 2016 1230 - 1430  
40 Places Room 11A

Director: [Mr Asif Muneer](#)

#### Outline

This is a new course which aims to cover the main areas of prosthetic surgery in urology. The course is aimed at trainees preparing for the FRCS(Urol) examination and also those with a specialist interest in prosthetic surgery as well as

consultants wishing to gain an update and surgical tips in this field. For the established prosthetic surgeon, tips on avoiding pitfalls and salvage surgery for complications will be covered in each section.

#### Objectives

Surgical techniques with the aid of surgical videos will be a focus of this course. At the end of the course participants should have a good understanding of:

- Minimising the risk of prosthesis infection and biofilms
- Theatre preparation and set up for prosthetic surgery
- Patient selection and techniques for male slings and artificial urinary sphincters
- Prosthetics in females – injectables, sacral neuromodulation, female tapes
- Penile prosthesis surgery – surgical techniques and dealing with complications

#### Faculty

**Mr Asif Muneer**, University College London Hospital  
**Mr Arie Parnham**, Senior Fellow in Andrology, University College London Hospital  
**Ms Tamsin Greenwell**, University College Hospital, London  
**Mr James Moore**, Eastbourne District General Hospital  
**Mr Ian Pearce**, Manchester Royal Infirmary

## Skills Course 10

### Ultrasound for the Urologist

Tuesday 28 June 2016 0900 - 1200  
18 Places The Department of Urology, Broadgreen Urology Centre, Broadgreen Hospital

Directors: [Ms Rebecca Hamm](#) & [Dr Jane Belfield](#)

#### Outline

1. Understand how to 'drive' an USS machine
2. To understand how to approach USS of the testis / kidney / bladder
3. To appreciate appropriate patient preparation for each organ
4. To gain practical experience in performing USS in each organ
5. To be aware of common pitfalls and how to avoid them

#### Objectives

To familiarise participants with the general principles of USS related to Urology

#### Faculty

**Ms Rebecca Hamm**, Consultant Diagnostic Urologist, Royal Liverpool and Broadgreen University Hospitals Trust



**Dr Jane Belfield**, Consultant Radiologist, Royal Liverpool and Broadgreen University Hospitals Trust

**Dr Peter Rowlands**, Consultant Radiologist, Royal Liverpool and Broadgreen University Hospitals Trust

**Dr Liz Joekes**, Consultant Radiologist, Royal Liverpool and Broadgreen University Hospitals Trust

**Mr Colin Griffin**, Ultrasound Lead, Ultrasonographer, Royal Liverpool and Broadgreen University Hospitals Trust

**Dr Mubeen Chaudhry**, SPR Radiology, Royal Liverpool and Broadgreen University Hospitals Trust

**Ms Melanie Monraats**, Consultant Radiologist, Royal Liverpool and Broadgreen University Hospitals Trust

### Skills Course 11

## Ultrasound for the Urologist

Tuesday 28 June 2016      1300 - 1600  
 18 Places      The Department of Urology, Broadgreen Urology Centre, Broadgreen Hospital

Directors: Ms Rebecca Hamm & Dr Jane Belfield

### Outline

1. Understand how to 'drive' an USS machine
2. To understand how to approach USS of the testis / kidney / bladder
3. To appreciate appropriate patient preparation for each organ
4. To gain practical experience in performing USS in each organ
5. To be aware of common pitfalls and how to avoid them

### Objectives

To familiarise participants with the general principles of USS related to Urology.

### Faculty

**Ms Rebecca Hamm**, Consultant Diagnostic Urologist, Royal Liverpool and Broadgreen University Hospitals Trust

**Dr Jane Belfield**, Consultant Radiologist, Royal Liverpool and Broadgreen University Hospitals Trust

**Dr Peter Rowlands**, Consultant Radiologist, Royal Liverpool and Broadgreen University Hospitals Trust

**Dr Liz Joekes**, Consultant Radiologist, Royal Liverpool and Broadgreen University Hospitals Trust

**Mr Colin Griffin**, Ultrasound Lead, Ultrasonographer, Royal Liverpool and Broadgreen University Hospitals Trust

**Dr Mubeen Chaudhry**, SPR Radiology, Royal Liverpool and Broadgreen University Hospitals Trust

**Ms Melanie Monraats**, Consultant Radiologist, Royal Liverpool and Broadgreen University Hospitals Trust

### Teaching Course 12

## Genitourinary Trauma

Wednesday 29 June 2016      0845 - 1045  
 40 Places      Room 11A

Director: Duncan Summerton

### Outline:

Trauma is an important part of medical practice. Genitourinary trauma is often, but not exclusively, seen within the context of other injuries and polytrauma. A Urologist should know how to manage trauma patients and needs to understand the basic underlying principles. Early and aggressive diagnosis and increasingly conservative management is the norm, but equally an appreciation of when and how to intervene remains key. It is also important to know when not to operate

This course will cover the basic concepts and the management of civilian, military and iatrogenic injuries. Renal, ureteric, bladder and genital trauma will all be addressed in an interactive and dynamic way and illustrated with real cases.

The course is aimed at any trainee or consultant who wishes to learn and/or update their knowledge with the aim of improving the immediate and long-term outcomes of those patients they see with urological trauma. The entire faculty have had extensive experience in civilian and military trauma cases and situations and very much look forward to meeting you.

### Objectives

The management of various types of urological trauma will be covered. A practical framework in which to work will be suggested to optimise outcomes and to reduce the risk of potentially avoidable complications.

### Faculty:

**Mr Paul CB Anderson**, Russells Hall Hospital

**Mr Roger Plail**, Conquest Hospital, Sussex

**Mr Davendra Sharma**, St George's Hospital

**Mr Duncan Summerton**, Leicester General Hospital

### Skills Course 13

## Lapascopic Suturing

Wednesday 29 June 2016      0845 - 1045  
 20 Places      Room 11B/C

Director: Mr Richard Coulthard

### Outline

Laparoscopic suturing is an integral part of advanced laparoscopic urological surgery. Whilst several devices are available that diminish the need for intracorporeal knot tying,





the ability to suture intracorporeally provides reassurance that unforeseen events can be managed effectively and expeditiously. The aim of this “hands-on” course is to allow the participants to gain as much practical experience in a dry lab environment.

### Objectives

The individual will be able to:

- Understand and perform technique laparoscopic intracorporeal knots.
- Develop and understanding of techniques of needle handling & placement
- Obtain the skills and confidence to hone their skills away from the operating theatre.

### Faculty

**Mr Richard Coulthard**, University Hospital of Wales, Cardiff  
**Mr Krishna Narahari**, University Hospital of Wales,  
**Mr Dan Burke**, Central Manchester University Hospitals  
**Mr Danny Painter**, Royal Gwent Hospital, South Wales  
**Mr Alistair Ramsden**, Derriford Hospital, Plymouth

## Teaching Course 14

### Robotic Urology: Safely Starting Pelvic and Upper Tract Procedures

Wednesday 29 June 2016 0900 - 1100  
 40 Places Room 13

Director: [Mr Jim Adshead](#)

### Suitability

This course is suitable for appointed consultants looking to develop or start Robotic surgery in any of the areas of Prostatectomy, Partial Nephrectomy, Pyeloplasty or Cystectomy. It will also be suitable for specialist registrars who are about to start first assisting at a robotic centre as part of their training or are hoping to start fellowship training in robotics as a career option.

### Outline

The delegates will leave with a good grounding in how make a business case for an NHS robot.

They will also have an understanding of safe patient positioning as well as how to avoid complications when starting pelvic and upper tract robotics. The aim will be to teach those techniques that avoid complications when commencing a programme or fellowship and will be suited to all those wishing to start as console surgeons or first assistants.

Topics will include setup of the robot system, patient preparation, procedural tips, instrumentation, troubleshooting and postoperative management.

Specific procedures covered include robotic prostatectomy, partial nephrectomy, pyeloplasty and bladder surgery by UK consultants with experience in the field of robotics.

Delegates will be able to get to grips with the device on animal models after completing their theoretical training. They will also be given a dedicated time slot for some technical training on the simulator and Si machine at the Intuitive booth at the time of booking.

### Faculty

**Mr Jim Adshead**, Lister Hospital  
**Professor John Kelly**, University College London Hospital  
**Mr Edward Rowe**, Southmead Hospital  
**Mr Ben Challacombe**, Guy's Hospital  
**Mr Declan Cahill**, Guy's Hospital  
**Mr Neil Barber**, Frimley Park Hospital

## Teaching Course 15

### Urology and the Law; How to avoid litigation and what to do when you get there

Wednesday 29 June 2016 1130 - 1330  
 50 Places Room 11A

Directors: [Mr Julian Shah](#) & [Mr John Reynard](#)

### Outline

The threat of litigation is ever present for today's practising urologists, ever more so as public expectations rise and as the medical profession comes under increasing scrutiny from the Civil Courts, the Criminal Courts and the GMC.

This course has the following aims to:

1. Discuss the standard of care urologists are expected to reach, knowledge of which is clearly required in order to attain that standard.
2. Outline the scale of clinical negligence, the chances and implications of civil litigation, summons to the Coroner's Court and of an appearance at a GMC Fitness to Practice Panel hearing.
3. Discuss common ways in which urologists expose themselves to the threat of legal action, both in general and in specific terms.
4. Outline learning points from the Bradford and Southampton medical manslaughter cases.
5. Give practical advice on how to avoid ending up in Court.
6. Give an overview of the process of litigation for those unlucky enough to experience it.
7. Discuss issues relating to the standard of expert evidence in urological malpractice claims.

John Reynard and Julian Shah have extensive experience of the interface between urological practice and the law

governing that practice through their work as Defendant and Claimant expert witnesses in clinical negligence cases, in GMC Disciplinary Hearings and in the Coroners' Courts. This has given them a unique insight into ways in which doctors can both increase and decrease their chances of litigation and of the consequences of litigation in terms of time spent defending a case and the psychological trauma associated with doing so. Drawing on these experiences they aim to furnish course delegates with simple, but effective tools for reducing their risk of suit and regulatory opprobrium.

### Faculty

**Mr John Reynard**, Oxford University Hospitals NHS Trust and The National Spinal Injuries Centre, Stoke Mandeville Hospital  
**Mr Julian Shah**, University College Hospitals Foundation NHS Trust and The Royal National Orthopaedic Hospital, Stanmore

- non-surgical treatment options
- 5. Microsurgical and endoscopic techniques for male infertility and the use of ultrasonography and seminal vesiculography as diagnostic techniques
- 6. Treatment options in men with sexual dysfunction including ejaculatory disorder

### Faculty

**Mr Asif Muneer**, University College London Hospital  
**Mr Rowland Rees**, University Hospital Southampton  
**Mr David Ralph**, University College London Hospital  
**Mr Oliver Kayes**, St James Hospital  
**Dr Miles Walkden**, Consultant Radiologist, University College London Hospital

## Teaching Course 16

### Practical Andrology for the General Urologist

Wednesday 29 June 2016      1130-1330  
 50 Places      Room 13

Directors: [Mr Asif Muneer](#) & [Mr Rowland Rees](#)

### Outline

Following a successful launch last year, this course aims to both teach and update clinicians on the practical aspects of managing general andrology conditions. The course is aimed at both trainee and consultant urologists with an interest in andrology. The course starts with an introduction on how to set up and deliver an andrology service. The course will focus on the commonest andrology conditions encountered within a general urology practice. Assessment and management of men with penile curvature, male factor infertility, erectile dysfunction and sexual dysfunction will be covered together with an overview of specialised diagnostic and advanced imaging techniques. Microsurgical techniques used in the management of male factor infertility will also be covered with guidance on learning the surgical skills.

### Objectives

The course will focus on the practical aspects related to each condition. At the end of the course participants should have a good understanding of:

1. How to set up and offer an andrology service
2. Avoiding pitfalls with common procedures such as circumcision and vasectomy
3. Investigation and treatment of erectile dysfunction and managing pharmacological treatment failures with surgery
4. Assessment and surgical management of penile curvature including the role of Doppler imaging and penile MRI and

## Skills Course 17

### Prostate Biopsy

Wednesday 29 June 2016      1130 - 1330  
 20 Places      Room 11 B/C

Director: [Mr Rick Popert](#)

### Outline

Prostate cancer diagnostic services in the UK are firmly embedded within the Two Week Wait cancer pathway and all urology departments have had to respond to this need. The commonest method to diagnose prostate cancer is by transrectal ultrasound guided prostate biopsy (TRUS Biopsy) but there continue to be concerns about misdiagnosis, mischaracterisation of cancer and the complications of sepsis and bleeding. The role of transperineal (TP) prostate biopsy will also be discussed in its relation to safe diagnostics.

This course will be aimed predominantly at trainees and those consultants involved in the diagnosis of prostate cancer providing delegates with an understanding of the essential prostate anatomy as it relates to both transrectal and transperineal biopsy, the administration of anaesthetic, the planning of targeted and systematic biopsies (TRUS & TP) based upon pre biopsy MRI findings and minimising the risks of sepsis. The importance of case selection or exclusion based upon DRE, PSA density, the timing of multi parametric MRI scanning and how prostate biopsy services can influence the 2WW pathway.

Following a series of short lectures on these topics, delegates will have the opportunity to be taught the techniques of TRUS Biopsy, local anaesthetic injection and cognitive directed targeted and systematic peripheral zone biopsies using TP biopsies by urologists and nurse specialists experienced at the procedure.

The course is envisaged to last for 2 hours with 30 minutes of didactic lectures and 90 minutes of hands on biopsy training on the models with up to 4 delegates per station and 6 stations (up to 20 delegates). There will be a faculty of 6 people to teach and train.



## Faculty

**Mr Rick Popert**, Guy's Hospital, London

**Mr Dominic Hodgson**, Portsmouth NHS Trust

**Mr Giles Rottenberg**, Consultant Radiologist, Guy's Hospital, London

**Mr Alistair Henderson**, Maidstone Hospital, Kent

**Mr Peter Acher**, Southend University Hospital, Essex

**Ms Netty Kinsella**, Nurse Consultant, The Royal Marsden Hospital, London

**Mr John Withington**, Urology Registrar, London Deanery

## Teaching Course 18

### The Modern Management of Urinary Stone Disease

Wednesday 29 June 2016 1430 - 1630  
70 Places Room 11A

Director: [Mr Daron Smith](#)

#### Objectives

Provide a factual update for the roles of conservative management, ESWL, Ureterorenoscopy, PCNL and medical preventative therapy in the current management of patients with Stone Disease. This will be followed by 5 interactive "as live" case presentations from each of the faculty, (unseen by the others), aimed at audience participation - "what would you do next and why" - to illustrate intra-operative decision making in the context of the updates provided in the earlier part of the course. This will be enhanced by "Round Table" Faculty discussion and summary to maximise the learning points for each case.

#### Faculty

**Mr Daron Smith**, University College Hospital, London

**Mr Oliver Wiseman**, Addenbrooke's Hospital, Cambridge

**Mr Jonathan Glass**, Guy's & St Thomas' Hospital, London

**Mr Robert Calvert**, Royal Liverpool and Broadgreen Hospitals

**Mr Mark Cutress**, Western General Hospital

## Teaching Course 19

### Effective Peer Review in 2016

Wednesday 29 June 2016 Room 13  
1430 - 1630 30 Places

Director: [Professor Prokar Dasgupta](#)

#### Objectives

This workshop will allow delegates to interact with the editors of three major urological journals - J Urol, Eur Urol and BJUI. A unique opportunity to learn about peer review and hone your critical appraisal skills.

## Introduction

**Prokar Dasgupta**, Editor in Chief, BJUI, International

**What makes a high quality surgical paper and how to review it.**

**Jay Smith**, Editor in Chief, J Urol

**How to perform an excellent and (not so good) peer review**

**Jim Catto**, Editor in Chief, Eur Urol.

**Evaluating a systematic review of literature**

**Prokar Dasgupta**

Each of the editors will discuss an article from their own journal which will be circulated to the delegates prior to the course.

## Faculty

**Professor Prokar Dasgupta**, Editor-in-Chief, BJU International

**Dr Joseph Smith**, Editor, The Journal of Urology

**Professor James Catto**, Editor-in-Chief, European Urology

## Skills Course 20

### Surgical Anatomy for the Urologist

Wednesday 29 June 2016 1300 - 1700  
20 Places Human Anatomy Resource Centre

Director: [Ms Tamsin Greenwell](#)

#### Outline

1. Anterior abdominal wall including midline, Pfannenstiel, Czerny, Gridiron, laparoscopic port access and inguinal/scrotal procedures region/hernia repair
2. Retroperitoneum including anatomy of nephrectomy, nephroureterectomy, RPLND and the autonomic nervous system.
3. Female pelvic anatomy including anatomy of colposuspension, rectus fascial sling, bladder neck AUS, ureteric re implantation, sacrocolpopexy, radical and simple cystectomy and lymphadenectomy.
4. Male pelvic anatomy including radical prostatectomy, radical cystectomy, lymphadenectomy.
5. Male perineal anatomy including urethroplasty, aus and male sling and penile prosthesis
6. Female perineal anatomy including vaginal prolapse repair, urethral diverticulum, urethroplasty and fistula repair

#### Faculty

**Mr John McCabe**, Whiston Hospital, Merseyside

**Professor David Nicol**, The Royal Marsden, London

**Ms Tamsin Greenwell**, University College Hospital, London

**Mr Paul Anderson**, Solihull

**Ms Suzanne Biers**, University College Hospital, London

**Ms Suzie Venn**, Western Sussex Hospital Trust, Sussex

**Mr Sachin Malde**, University College Hospital, London

# GreenLight XPS™ Laser Therapy Satellite Symposium

A true day-case procedure that is cost saving to the NHS.

Hear from our expert panel of urologists on the cost savings you can generate in your hospital by moving to day-case with GreenLight XPS™ and their recommendations on setting up a day-case patient pathway.

**27<sup>th</sup> June 2016**

12 pm to 12.45 pm

Main auditorium - Hall 1a

## Speakers:

**Mr Gordon Muir, Consultant Urological Surgeon**  
King's College Hospital London

**Mr Andrew Thomas, Consultant Urological Surgeon**  
Princess of Wales Hospital, Bridgend

**Mr Richard Hindley**  
Consultant Urological Surgeon, Hampshire Hospitals  
Foundation Trust

**Mr Michael Branagan-Harris**  
Expert on Health Economics and NICE MTEP processes

CAUTION: The law restricts this device to sale by or on the order of a physician. Please refer to package insert provided with the product for complete indications for use, contraindications, warnings, precautions, adverse events, and instructions prior to using these products. Information for the use only in countries with applicable health authority product registrations. Bench test results on file with Boston Scientific. Bench test results may not necessarily be indicative of clinical performance. All trademarks are the property of their respective owners.

## BAUS 2016 App

### How to download the App to your device from your App store



To access and download the App, simply open the App store on your device, then search for 'BAUS 2016'

Follow the on-screen instructions on how to download it to your device.

#### Downloading the App to your device will allow you to:

- View documents and posters within the app
- Receive notifications from the organisers
- Receive notifications when another attendee sends you a message

#### You can then use the App to:

- View the main programme
- Plan your week
- View Overseas Speaker, Guest Lecturer and Award Winner profiles
- View Paper and Poster Abstracts
- View the Exhibition Plan and Exhibitor Details
- Ask questions within the Main Auditorium
- Provide session feedback
- Find out further information about the Meeting and Social Events



## How to save the App to your device

### iPad:

1. Access the app on your iPad.
2. Click the Plus button at the top. On iPads running iOS 7, this is be a Share button that looks like a box with an arrow coming out of it.
3. Select Add to Home Screen.
4. Enter the name you would like to appear under the icon.
5. Click the Add button



### iPhone:

1. Access the app on your iPhone. This will elicit a pop-up with instructions for downloading the app icon to your home screen (pictured).
2. Click the menu button. It might look like a box with an arrow coming out of it.
3. Select Add to Home Screen
4. Enter the name you would like to appear under the icon.
5. Click the Add at the top-right of your screen.



### Android:

The process for saving the shortcut on your phone's home screen differs depending on what OS your Android is running. For Androids running more recent operating systems, there should be an Add to Home screen option in your browser menu.

1. Access the app on your phone's browser.
2. "Bookmark" the page. Depending on the model, you may be able to determine where on your phone the bookmark is saved, and home screen should be one of the options. Otherwise, continue to step 3.
3. Click and hold the bookmark and you should be presented with the option of adding it to your home screen.

To access your full menu, you will need to find the menu icon - 3 white dots ordered one on top of the other. Depending on your device, you may need to tap the bottom right hand corner of the screen for this to appear



## Blackberry:

1. Access the app on your browser.
2. Open your Blackberry's full menu.
3. Select "Add to Home Screen."



## Other:

If the mobile device you are looking for is not listed here, you will still be able to bookmark this page but the event icon may not appear on your home screen. Instead, you may see a screenshot of the start page of your app or a default bookmark icon for that device. At this time, there is no downloadable icon for desktop/computer browsers.

If the mobile device you are looking for is not listed here, you will still be able to bookmark this page but the event icon may not appear on your home screen. Instead, you may see a screenshot of the start page of your app or a default bookmark icon for that device.

•At this time, there is no downloadable icon for desktop/computer browsers• Why is it asking me to install the event app to my home screen (I have already done this?)

Installing the app to your home screen will allow you to access the app with one click, rather than typing the URL into your address bar

Every time the app is updated it will ask you if you want to install the event app to your home screen – irrespective of whether you have already installed it or not

If you have already installed the app on your home screen, you do not need to do it again.



# Emergency Procedures

In the event of an emergency the following announcement will be made:

**“Attention please – Attention please! We have an emergency within the building. Please leave by the nearest available exit! Do not use the lifts!”**

In the event of an evacuation of the Arena and Convention Centre, all delegates, exhibitors and organisers are requested to muster on the piazza area outside the Jury's Inn, indicated on the plan below. This is necessary so that we can readily contact everyone to return to their building when the emergency is over.

Delegates with access requirements will be guided to the nearest refuge point by a venue steward, where they will receive further assistance.

No one is to return to the building until official announcements have been made by ACC Liverpool.







## BJU INTERNATIONAL AT THE BAUS 2016 ANNUAL MEETING

- **BJU International Guest Lecture** - Novel non-coding RNAs as biomarkers and molecular regulators in prostate cancer
- **BJU International Sub-Plenary Session** - What's new in functional urology?
- **BJU International Sponsored Teaching Course** - Effective peer review in 2016
- **John Blandy Prize and Lecture**
- **BJU International Prize for the Best Paper at BAUS 2016**

## JOIN US AT STAND 227

### BJUI JOURNAL SUPPORTING BRITISH UROLOGY



- Discover the latest content
- See the iOS and Android apps
- Learn about Open Access
- Discover all the support offered to authors

WILEY

[www.bjui.org](http://www.bjui.org)

### BJUI KNOWLEDGE THE CPD PORTAL FOR UROLOGISTS



- Activate your account
- Access CME on any device
- Log your CPD activity
- Endorsed and supported by BAUS

  
bjuiknowledge

[www.bjuiknowledge.org](http://www.bjuiknowledge.org)

The British Association of Urological Surgeons  
35/43 Lincoln's Inn Fields, London WC2A 3PE, UK  
Tel: +44 (0) 20 7869 6950  
Fax: +44 (0) 20 7404 5048  
Email: [events@baus.org.uk](mailto:events@baus.org.uk)  
[www.baus.org.uk](http://www.baus.org.uk)



Registered Charity No: 1127044  
Registered Company No: 06054614  
VAT Registration No: 380 5441 59

